



[Go to Product page](#)

Datasheet for ABIN2854354
anti-SEC61G antibody (Center)

1 Image

Overview

Quantity:	100 µL
Target:	SEC61G
Binding Specificity:	Center
Reactivity:	Human
Host:	Rabbit
Clonality:	Polyclonal
Conjugate:	This SEC61G antibody is un-conjugated
Application:	Western Blotting (WB)

Product Details

Immunogen:	Carrier-protein conjugated synthetic peptide encompassing a sequence within the center region of human Sec61 gamma subunit. The exact sequence is proprietary.
Isotype:	IgG
Cross-Reactivity:	Mouse (Murine), Rat (Rattus), Zebrafish (Danio rerio), Dog (Canine), Rhesus Monkey, Cow (Bovine)
Cross-Reactivity (Details):	Mouse (100 %), Rat (100 %), Zebrafish (100 %), Dog (100 %), Rhesus Monkey (100 %), Bovine (100 %)
Characteristics:	Rabbit polyclonal antibody to Sec61 gamma subunit (Sec61 gamma subunit) Sec61 gamma subunit antibody
Purification:	Affinity purified by Protein A.

Target Details

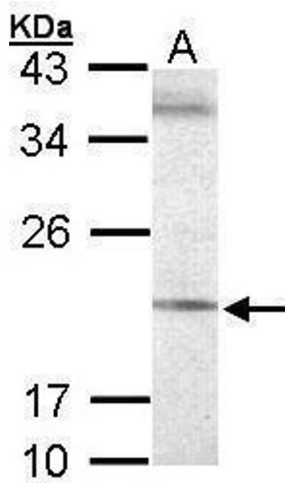
Target:	SEC61G
Alternative Name:	Sec61 gamma Subunit (SEC61G Products)
Background:	<p>The Sec61 complex is the central component of the protein translocation apparatus of the endoplasmic reticulum (ER) membrane. Oligomers of the Sec61 complex form a transmembrane channel where proteins are translocated across and integrated into the ER membrane. This complex consists of three membrane proteins- alpha, beta, and gamma. This gene encodes the gamma-subunit protein. Alternatively spliced transcript variants encoding the same protein have been identified.</p> <p>Cellular Localization: Endoplasmic reticulum membrane, Single-pass membrane protein</p>
Molecular Weight:	8 kDa
Gene ID:	23480

Application Details

Application Notes:	<p>Suggested dilution Reference Western blot 1:500-1:3000* Not tested in other applications.</p> <p>*Optimal dilutions/concentrations should be determined by the researcher.Suggested dilutionReferenceWestern blot1:500-1:3000*</p>
Comment:	Positive Control: 293T , A431 , H1299 , HeLa , HepG2 , Molt-4
Restrictions:	For Research Use only

Handling

Format:	Liquid
Concentration:	1.00 mg/mL
Buffer:	1XPBS, 1 % BSA, 20 % Glycerol (pH 7). 0.01 % Thimerosal was added as a preservative.
Preservative:	Thimerosal (Merthiolate)
Precaution of Use:	This product contains Thimerosal (Merthiolate): a POISONOUS AND HAZARDOUS SUBSTANCE which should be handled by trained staff only.
Storage:	-20 °C
Storage Comment:	Keep as concentrated solution. Aliquot and store at -20°C or below. Avoid multiple freeze-thaw cycles.



Western Blotting

Image 1. WB Image Sample (30 ug of whole cell lysate) A:
293T 12% SDS PAGE antibody diluted at 1:500