



Datasheet for ABIN2854358
anti-HPCAL1 antibody



[Go to Product page](#)

2 Images

Overview

| | |
|--------------|---------------------------------------|
| Quantity: | 100 µL |
| Target: | HPCAL1 |
| Reactivity: | Human |
| Host: | Rabbit |
| Clonality: | Polyclonal |
| Conjugate: | This HPCAL1 antibody is un-conjugated |
| Application: | Western Blotting (WB) |

Product Details

| | |
|-------------------|---|
| Immunogen: | Recombinant protein encompassing a sequence within the center region of human HPCAL1. The exact sequence is proprietary. |
| Isotype: | IgG |
| Cross-Reactivity: | Human, Mouse |
| Characteristics: | Rabbit Polyclonal antibody to HPCAL1 (hippocalcin-like 1) HPCAL1 antibody [N1C3] |
| Purification: | Purified by antigen-affinity chromatography. |

Target Details

| | |
|-------------------|--|
| Target: | HPCAL1 |
| Alternative Name: | hippocalcin like 1 (HPCAL1 Products) |

Target Details

Background: The protein encoded by this gene is a member of neuron-specific calcium-binding proteins family found in the retina and brain. It is highly similar to human hippocalcin protein and nearly identical to the rat and mouse hippocalcin like-1 proteins. It may be involved in the calcium-dependent regulation of rhodopsin phosphorylation and may be of relevance for neuronal signalling in the central nervous system. There are two alternatively spliced transcript variants of this gene, with multiple polyadenylation sites.

Molecular Weight: 22 kDa

Gene ID: 3241

UniProt: [P37235](#)

Application Details

Application Notes: WB: 1:500-1:3000. Optimal dilutions/concentrations should be determined by the researcher. Not tested in other applications.

Comment: Positive Control: Mouse brain , HPCAL1 transfected 293T

Restrictions: For Research Use only

Handling

Format: Liquid

Concentration: 0.23 mg/mL

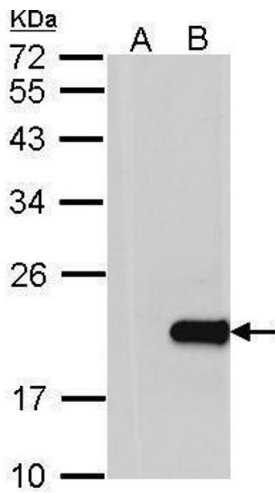
Buffer: 0.1M Tris-Glycine (pH 7), 10 % Glycerol, 0.01 % Thimerosal

Preservative: Thimerosal (Merthiolate)

Precaution of Use: This product contains Thimerosal (Merthiolate): a POISONOUS AND HAZARDOUS SUBSTANCE which should be handled by trained staff only.

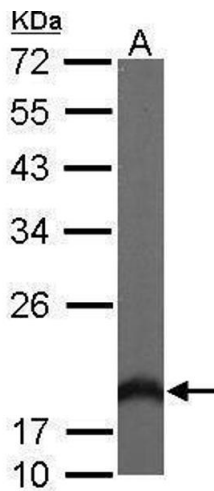
Storage: 4 °C,-20 °C

Storage Comment: Store as concentrated solution. Centrifuge briefly prior to opening vial. For short-term storage (1-2 weeks), store at 4°C. For long-term storage, aliquot and store at -20°C or below. Avoid multiple freeze-thaw cycles.



Western Blotting

Image 1. WB Image Western Blot analysis of HPCAL1 expression in transfected 293T cell line by HPCAL1 polyclonal antibody. A: Non-transfected lysate. B: HPCAL1 transfected lysate. 12% SDS PAGE antibody diluted at 1:500



Western Blotting

Image 2. WB Image Sample (50 ug of whole cell lysate) A: Mouse brain 12% SDS PAGE antibody diluted at 1:1000