

Datasheet for ABIN2854360

anti-RPL17 antibody[Go to Product page](#)**1** Image

Overview

Quantity:	100 µL
Target:	RPL17
Reactivity:	Human
Host:	Rabbit
Clonality:	Polyclonal
Conjugate:	This RPL17 antibody is un-conjugated
Application:	Western Blotting (WB)

Product Details

Immunogen:	Recombinant protein encompassing a sequence within the center region of human RPL17. The exact sequence is proprietary.
Isotype:	IgG
Cross-Reactivity:	Human, Rat
Characteristics:	Rabbit polyclonal antibody to RPL17 (ribosomal protein L17) RPL17 antibody [N1C3]
Purification:	Purified by antigen-affinity chromatography.

Target Details

Target:	RPL17
Alternative Name:	ribosomal protein L17 (RPL17 Products)

Target Details

Background: Ribosomes, the organelles that catalyze protein synthesis, consist of a small 40S subunit and a large 60S subunit. Together these subunits are composed of 4 RNA species and approximately 80 structurally distinct proteins. This gene encodes a ribosomal protein that is a component of the 60S subunit. The protein belongs to the L22P family of ribosomal proteins. It is located in the cytoplasm. This gene has been referred to as rpL23 because the encoded protein shares amino acid identity with ribosomal protein L23 from *Halobacterium marismortui*, however, its official symbol is RPL17. Two alternative splice variants have been observed, each encoding the same protein. As is typical for genes encoding ribosomal proteins, there are multiple processed pseudogenes of this gene dispersed through the genome.

Molecular Weight: 21 kDa

Gene ID: 6139

UniProt: [P18621](#)

Application Details

Application Notes: WB: 1:500-1:3000. Optimal dilutions/concentrations should be determined by the researcher. Not tested in other applications.

Comment: Positive Control: HeLaS3 , HepG2 , rat pancreas

Restrictions: For Research Use only

Handling

Format: Liquid

Concentration: 1 mg/mL

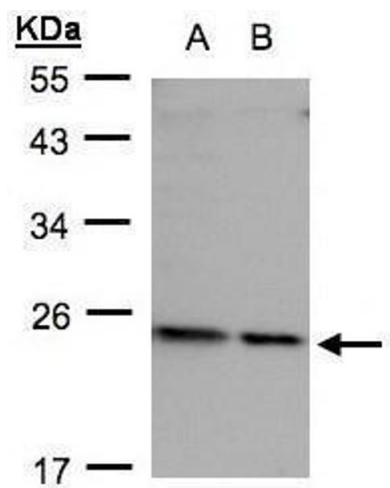
Buffer: 0.1M Tris-Glycine (pH 7), 10 % Glycerol, 0.01 % Thimerosal

Preservative: Thimerosal (Merthiolate)

Precaution of Use: This product contains Thimerosal (Merthiolate): a POISONOUS AND HAZARDOUS SUBSTANCE which should be handled by trained staff only.

Storage: 4 °C, -20 °C

Storage Comment: Store as concentrated solution. Centrifuge briefly prior to opening vial. For short-term storage (1-2 weeks), store at 4°C. For long-term storage, aliquot and store at -20°C or below. Avoid multiple freeze-thaw cycles.



Western Blotting

Image 1. WB Image Sample(30 ug whole cell lysate) A: HeLa S3, B: Hep G2, 12% SDS PAGE diluted at 1:500