

Datasheet for ABIN2854361  
**anti-RPLP1 antibody (Center)**[Go to Product page](#)

## 1 Image

## Overview

Quantity:	100 µL
Target:	RPLP1
Binding Specificity:	Center
Reactivity:	Human
Host:	Rabbit
Clonality:	Polyclonal
Conjugate:	This RPLP1 antibody is un-conjugated
Application:	Immunohistochemistry (Paraffin-embedded Sections) (IHC (p))

## Product Details

Immunogen:	Recombinant protein encompassing a sequence within the center region of human RPLP1. The exact sequence is proprietary.
Isotype:	IgG
Cross-Reactivity:	Rhesus Monkey, Cow (Bovine)
Cross-Reactivity (Details):	Rhesus Monkey (100 %), Bovine (100 %)
Characteristics:	Rabbit polyclonal antibody to RPLP1 (ribosomal protein, large, P1) RPLP1 antibody [N1C3]
Purification:	Purified by antigen-affinity chromatography.

## Target Details

Target:	RPLP1
Alternative Name:	RPLP1 ( <a href="#">RPLP1 Products</a> )
Background:	<p>Ribosomes, the organelles that catalyze protein synthesis, consist of a small 40S subunit and a large 60S subunit. Together these subunits are composed of 4 RNA species and approximately 80 structurally distinct proteins. This gene encodes a ribosomal phosphoprotein that is a component of the 60S subunit. The protein, which is a functional equivalent of the E. coli L7/L12 ribosomal protein, belongs to the L12P family of ribosomal proteins. It plays an important role in the elongation step of protein synthesis. Unlike most ribosomal proteins, which are basic, the encoded protein is acidic. Its C-terminal end is nearly identical to the C-terminal ends of the ribosomal phosphoproteins P0 and P2. The P1 protein can interact with P0 and P2 to form a pentameric complex consisting of P1 and P2 dimers, and a P0 monomer. The protein is located in the cytoplasm. Two alternatively spliced transcript variants that encode different proteins have been observed. As is typical for genes encoding ribosomal proteins, there are multiple processed pseudogenes of this gene dispersed through the genome.</p>
Molecular Weight:	12 kDa
Gene ID:	6176

## Application Details

Application Notes:	<p>Suggested dilution Reference IHC (Formalin-fixed paraffin-embedded sections) 1:100-1:1000* Not tested in other applications. *Optimal dilutions/concentrations should be determined by the researcher. Suggested dilution Reference IHC (Formalin-fixed paraffin-embedded sections) 1:100-1:1000*</p>
Comment:	Positive Control: Target recombinant protein
Restrictions:	For Research Use only

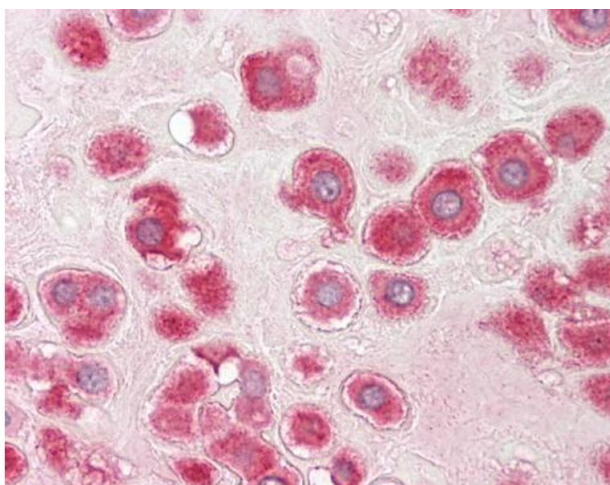
## Handling

Format:	Liquid
Concentration:	1 mg/mL
Buffer:	1XPBS, 1 % BSA, 20 % Glycerol ( pH 7). 0.01 % Thimerosal was added as a preservative.
Preservative:	Thimerosal (Merthiolate)

## Handling

Precaution of Use:	This product contains Thimerosal (Merthiolate): a POISONOUS AND HAZARDOUS SUBSTANCE which should be handled by trained staff only.
Storage:	-20 °C
Storage Comment:	Keep as concentrated solution. Aliquot and store at -20°C or below. Avoid multiple freeze-thaw cycles.

## Images



### Immunohistochemistry

**Image 1.** IHC-P Image RPLP1 antibody [N1C3] detects RPLP1 protein at cytoplasm on human placenta by immunohistochemical analysis. Sample: Paraffin-embedded placenta. RPLP1 antibody [N1C3] , dilution: 1:100.