

Datasheet for ABIN2854363

**anti-PHF1 antibody**[Go to Product page](#)**1** Image

## Overview

Quantity:	100 µL
Target:	PHF1
Reactivity:	Human
Host:	Rabbit
Clonality:	Polyclonal
Conjugate:	This PHF1 antibody is un-conjugated
Application:	Western Blotting (WB)

## Product Details

Immunogen:	Recombinant protein encompassing a sequence within the center region of human PHF1. The exact sequence is proprietary.
Isotype:	IgG
Cross-Reactivity:	Human
Characteristics:	Rabbit polyclonal antibody to PHF1 (PHD finger protein 1) PHF1 antibody [N1N3]
Purification:	Affinity purified by Protein A.

## Target Details

Target:	PHF1
Alternative Name:	PHD finger protein 1 ( <a href="#">PHF1 Products</a> )

## Target Details

**Background:** This gene encodes a protein with significant sequence similarity to Drosophila Polycomblike. The encoded protein contains a zinc finger-like PHD (plant homeodomain) finger which is distinct from other classes of zinc finger motifs and which shows the typical Cys4-His-Cys3 arrangement. PHD finger genes are thought to belong to a diverse group of transcriptional regulators possibly affecting eukaryotic gene expression by influencing chromatin structure. Two transcript variants have been found for this gene.

Cellular Localization: Nucleus

**Molecular Weight:** 62 kDa

**Gene ID:** 5252

**UniProt:** [O43189](#)

## Application Details

**Application Notes:** WB: 1:500-1:3000. Optimal dilutions/concentrations should be determined by the researcher. Not tested in other applications.

**Comment:** Positive Control: A431 , H1299

**Restrictions:** For Research Use only

## Handling

**Format:** Liquid

**Concentration:** 5.78 mg/mL

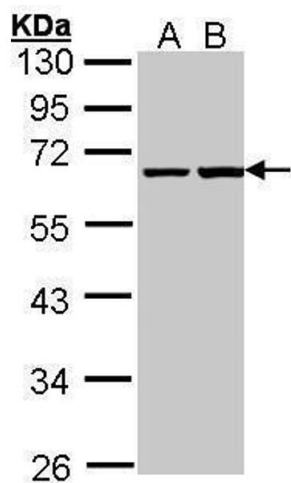
**Buffer:** 0.1M Tris-Glycine ( pH 7), 10 % Glycerol, 0.01 % Thimerosal

**Preservative:** Thimerosal (Merthiolate)

**Precaution of Use:** This product contains Thimerosal (Merthiolate): a POISONOUS AND HAZARDOUS SUBSTANCE which should be handled by trained staff only.

**Storage:** 4 °C,-20 °C

**Storage Comment:** Store as concentrated solution. Centrifuge briefly prior to opening vial. For short-term storage (1-2 weeks), store at 4°C. For long-term storage, aliquot and store at -20°C or below. Avoid multiple freeze-thaw cycles.



**Western Blotting**

**Image 1.** WB Image Sample (30 ug of whole cell lysate) A: A431 , B: H1299 10% SDS PAGE antibody diluted at 1:1000