

Datasheet for ABIN2854367
anti-SPHKAP antibody (N-Term)



[Go to Product page](#)

1 Image

Overview

Quantity:	100 µL
Target:	SPHKAP
Binding Specificity:	N-Term
Reactivity:	Human
Host:	Rabbit
Clonality:	Polyclonal
Conjugate:	This SPHKAP antibody is un-conjugated
Application:	Western Blotting (WB)

Product Details

Immunogen:	Recombinant protein encompassing a sequence within the N-terminus region of human SPHKAP. The exact sequence is proprietary.
Isotype:	IgG
Cross-Reactivity:	Human
Characteristics:	Rabbit polyclonal antibody to SPHKAP (SPHK1 interactor, AKAP domain containing) SPHKAP antibody
Purification:	Purified by antigen-affinity chromatography.

Target Details

Target:	SPHKAP
---------	--------

Target Details

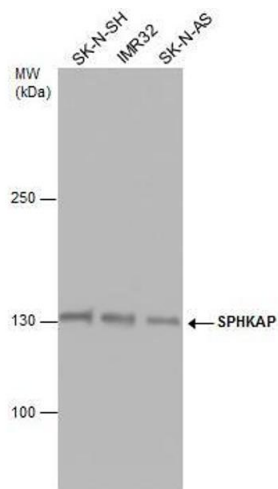
Alternative Name:	SPHK1 interactor, AKAP domain containing (SPHKAP Products)
Background:	Anchoring protein that mediates the subcellular compartmentation of cAMP-dependent protein kinase (PKA type II). May act as a converging factor linking cAMP and sphingosine signaling pathways. Plays a regulatory role in the modulation of SPHK1. Cellular Localization: Cytoplasm
Molecular Weight:	186 kDa
Gene ID:	80309
UniProt:	Q2M3C7

Application Details

Application Notes:	WB: 1:500-1:3000. Optimal dilutions/concentrations should be determined by the researcher. Not tested in other applications.
Comment:	Positive Control: SK-N-SH , IMR32 , SK-N-AS
Restrictions:	For Research Use only

Handling

Format:	Liquid
Concentration:	1 mg/mL
Buffer:	0.1M Tris-Glycine (pH 7), 10 % Glycerol, 0.01 % Thimerosal
Preservative:	Thimerosal (Merthiolate)
Precaution of Use:	This product contains Thimerosal (Merthiolate): a POISONOUS AND HAZARDOUS SUBSTANCE which should be handled by trained staff only.
Storage:	4 °C,-20 °C
Storage Comment:	Store as concentrated solution. Centrifuge briefly prior to opening vial. For short-term storage (1-2 weeks), store at 4°C. For long-term storage, aliquot and store at -20°C or below. Avoid multiple freeze-thaw cycles.



Western Blotting

Image 1. WB Image SPHKAP antibody detects SPHKAP protein by western blot analysis. Various whole cell extracts (30 µg) were separated by 5% SDS-PAGE, and the membrane was blotted with SPHKAP antibody, diluted at 1:1000.