

Datasheet for ABIN2854369
anti-Peripherin antibody



[Go to Product page](#)

1 Image

Overview

Quantity:	100 µL
Target:	Peripherin (PRPH)
Reactivity:	Human
Host:	Rabbit
Clonality:	Polyclonal
Conjugate:	This Peripherin antibody is un-conjugated
Application:	Western Blotting (WB)

Product Details

Immunogen:	Recombinant protein encompassing a sequence within the center region of human Peripherin. The exact sequence is proprietary.
Isotype:	IgG
Cross-Reactivity:	Human
Characteristics:	Rabbit polyclonal antibody to Peripherin (peripherin) Peripherin antibody [N1N3]
Purification:	Purified by antigen-affinity chromatography.

Target Details

Target:	Peripherin (PRPH)
Alternative Name:	peripherin (PRPH Products)

Target Details

Background: This gene encodes a cytoskeletal protein found in neurons of the peripheral nervous system. The encoded protein is a type III intermediate filament protein with homology to other cytoskeletal proteins such as desmin, and is a different protein than the peripherin found in photoreceptors. Mutations in this gene have been associated with susceptibility to amyotrophic lateral sclerosis.

Molecular Weight: 54 kDa

Gene ID: 5630

UniProt: [P41219](#)

Application Details

Application Notes: WB: 1:500-1:3000. Optimal dilutions/concentrations should be determined by the researcher. Not tested in other applications.

Comment: Positive Control: HeLa

Restrictions: For Research Use only

Handling

Format: Liquid

Concentration: 1 mg/mL

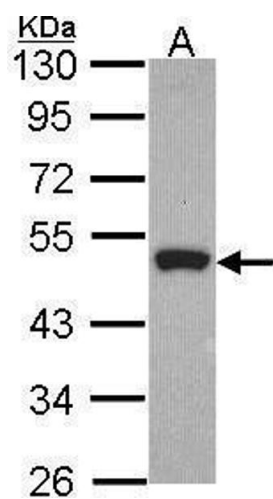
Buffer: 0.1M Tris-Glycine (pH 7), 10 % Glycerol, 0.01 % Thimerosal

Preservative: Thimerosal (Merthiolate)

Precaution of Use: This product contains Thimerosal (Merthiolate): a POISONOUS AND HAZARDOUS SUBSTANCE which should be handled by trained staff only.

Storage: 4 °C,-20 °C

Storage Comment: Store as concentrated solution. Centrifuge briefly prior to opening vial. For short-term storage (1-2 weeks), store at 4°C. For long-term storage, aliquot and store at -20°C or below. Avoid multiple freeze-thaw cycles.



Western Blotting

Image 1. WB Image Sample (30 ug of whole cell lysate) A:
Hela 10% SDS PAGE Peripherin antibody antibody diluted
at 1:1000