

Datasheet for ABIN2854374  
**anti-HLA-DRB4 antibody (Center)**[Go to Product page](#)

## 1 Image

## Overview

Quantity:	100 µL
Target:	HLA-DRB4
Binding Specificity:	Center
Reactivity:	Human
Host:	Rabbit
Clonality:	Polyclonal
Conjugate:	This HLA-DRB4 antibody is un-conjugated
Application:	Western Blotting (WB)

## Product Details

Immunogen:	Recombinant protein encompassing a sequence within the center region of human HLA DR beta. The exact sequence is proprietary.
Isotype:	IgG
Characteristics:	Rabbit polyclonal antibody to HLA-DRB4 (major histocompatibility complex, class II, DR beta 4) HLA DR beta antibody [N1C3]
Purification:	Purified by antigen-affinity chromatography.

## Target Details

Target:	HLA-DRB4
Alternative Name:	HLA-DRB4 ( <a href="#">HLA-DRB4 Products</a> )

## Target Details

**Background:** HLA-DRB4 belongs to the HLA class II beta chain paralogues. This class II molecule is a heterodimer consisting of an alpha (DRA) and a beta (DRB) chain, both anchored in the membrane. It plays a central role in the immune system by presenting peptides derived from extracellular proteins. Class II molecules are expressed in antigen presenting cells (APC: B lymphocytes, dendritic cells, macrophages). The beta chain is approximately 26-28 kDa and its gene contains 6 exons. Exon one encodes the leader peptide, exons 2 and 3 encode the two extracellular domains, exon 4 encodes the transmembrane domain and exon 5 encodes the cytoplasmic tail. Within the DR molecule the beta chain contains all the polymorphisms specifying the peptide binding specificities. Typing for these polymorphisms is routinely done for bone marrow and kidney transplantation. DRB1 is expressed at a level five times higher than its paralogues DRB3, DRB4 and DRB5. The presence of DRB4 is linked with allelic variants of DRB1, otherwise it is omitted. There are 4 related pseudogenes: DRB2, DRB6, DRB7, DRB8 and DRB9.

Cellular Localization: Membrane, Single-pass type I membrane protein

**Molecular Weight:** 30 kDa

**Gene ID:** 3126

**Pathways:** [TCR Signaling](#), [Positive Regulation of Peptide Hormone Secretion](#), [Production of Molecular Mediator of Immune Response](#), [Human Leukocyte Antigen \(HLA\) in Adaptive Immune Response](#)

## Application Details

**Application Notes:** Suggested dilution Reference Western blot 1:500-1:3000\* Not tested in other applications.  
\*Optimal dilutions/concentrations should be determined by the researcher.Suggested dilutionReferenceWestern blot1:500-1:3000\*

**Comment:** Positive Control: Raji

**Restrictions:** For Research Use only

## Handling

**Format:** Liquid

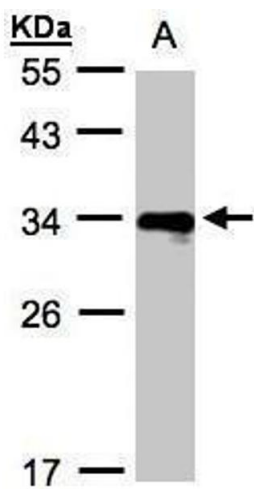
**Concentration:** 1 mg/mL

**Buffer:** 0.1M Tris, 0.1M Glycine, 10 % Glycerol ( pH 7). 0.01 % Thimerosal was added as a preservative.

Handling

Preservative:	Thimerosal (Merthiolate)
Precaution of Use:	This product contains Thimerosal (Merthiolate): a POISONOUS AND HAZARDOUS SUBSTANCE which should be handled by trained staff only.
Storage:	-20 °C
Storage Comment:	Keep as concentrated solution. Aliquot and store at -20°C or below. Avoid multiple freeze-thaw cycles.

Images



**Western Blotting**

**Image 1.** WB Image Sample(30 ug whole cell lysate) A:Raji , 12% SDS PAGE antibody diluted at 1:1000