

Datasheet for ABIN2854376

anti-TUBB4 antibody

3 Images



[Go to Product page](#)

Overview

Quantity:	100 µL
Target:	TUBB4 (TUBB4A)
Reactivity:	Human
Host:	Rabbit
Clonality:	Polyclonal
Conjugate:	This TUBB4 antibody is un-conjugated
Application:	Western Blotting (WB), Immunofluorescence (IF), Immunocytochemistry (ICC)

Product Details

Immunogen:	Recombinant protein encompassing a sequence within the center region of human beta Tubulin 4. The exact sequence is proprietary.
Isotype:	IgG
Cross-Reactivity:	Human, Mouse, Rat
Characteristics:	Rabbit Polyclonal antibody to beta Tubulin 4 (tubulin, beta 4) beta Tubulin 4 antibody
Purification:	Purified by antigen-affinity chromatography.

Target Details

Target:	TUBB4 (TUBB4A)
Alternative Name:	tubulin beta 4A class IVa (TUBB4A Products)

Target Details

Background: Tubulin is the major constituent of microtubules. It binds two moles of GTP, one at an exchangeable site on the beta chain and one at a non-exchangeable site on the alpha-chain.

Molecular Weight: 50 kDa

Gene ID: 10382

UniProt: [P04350](#)

Application Details

Application Notes: WB: 1:500-1:3000. ICC/IF: 1:100-1:1000. Optimal dilutions/concentrations should be determined by the researcher. Not tested in other applications.

Comment: Positive Control: NIH-3T3 , 293T

Restrictions: For Research Use only

Handling

Format: Liquid

Concentration: 0.41 mg/mL

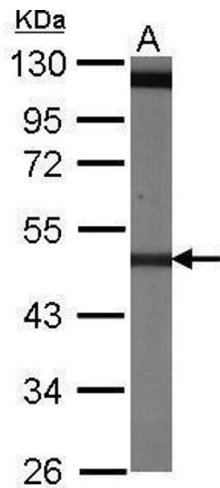
Buffer: 0.1M Tris-Glycine (pH 7), 10 % Glycerol, 0.01 % Thimerosal

Preservative: Thimerosal (Merthiolate)

Precaution of Use: This product contains Thimerosal (Merthiolate): a POISONOUS AND HAZARDOUS SUBSTANCE which should be handled by trained staff only.

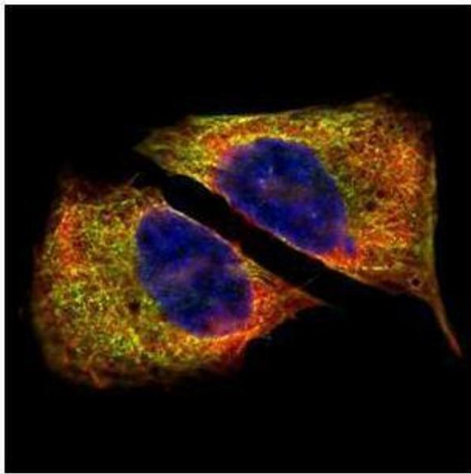
Storage: 4 °C,-20 °C

Storage Comment: Store as concentrated solution. Centrifuge briefly prior to opening vial. For short-term storage (1-2 weeks), store at 4°C. For long-term storage, aliquot and store at -20°C or below. Avoid multiple freeze-thaw cycles.



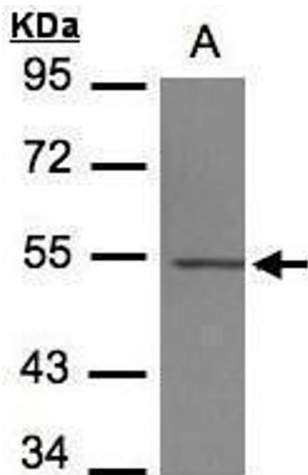
Western Blotting

Image 1. WB Image Sample (30 ug of whole cell lysate) A:
NIH-3T3 10% SDS PAGE antibody diluted at 1:1000



Immunofluorescence

Image 2. ICC/IF Image Confocal immunofluorescence analysis (Olympus FV10i) of paraformaldehyde-fixed U2OS, using beta Tubulin 4, antibody (Green) at 1:500 dilution. Alpha-tubulin filaments were labeled with (Red) at 1:2000.



Western Blotting

Image 3. WB Image Sample(30 µg of whole cell lysate)
A:293T 7.5% SDS PAGE antibody diluted at 1:1000