

Datasheet for ABIN285438

anti-Campylobacter jejuni antibody**3** Images**2** Publications[Go to Product page](#)

Overview

Quantity:	1 mL
Target:	Campylobacter jejuni
Reactivity:	Campylobacter jejuni
Host:	Rabbit
Clonality:	Polyclonal
Conjugate:	This Campylobacter jejuni antibody is un-conjugated
Application:	ELISA, Western Blotting (WB), Immunohistochemistry (IHC)

Product Details

Immunogen:	Campylobacter jejuni antibody was raised in rabbit using Campylobacter jejuni, ATCC strain 29428 as the immunogen.
Purity:	> 95 % pure

Target Details

Target:	Campylobacter jejuni
Abstract:	Campylobacter jejuni Products
Target Type:	Bacteria

Application Details

Application Notes:	Optimal conditions to be determined by end user
Restrictions:	For Research Use only

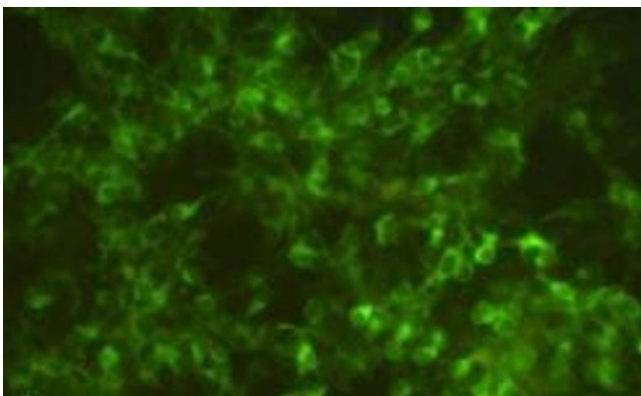
Handling

Format:	Liquid
Concentration:	Lot specific
Buffer:	Protein A purified IgG fraction in 10 mM PBS, pH 7.3 with 0.1 % NaN ₃ .
Preservative:	Sodium azide
Precaution of Use:	This product contains sodium azide as preservative. Although the amount of sodium azide is very small appropriate care must be taken when handling this product.
Handling Advice:	Avoid repeated freeze/thaw cycles
Storage:	-20 °C
Storage Comment:	Store at 4 °C for short term storage. Aliquot and store at -20 °C for long term storage.

Publications

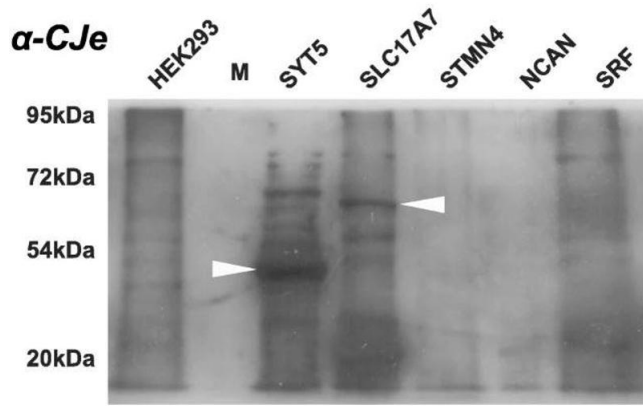
Product cited in:	<p>Kleine, Reuss et al.: "Interactions of Antibodies to the Gram-Negative Gastric Bacterium <i>Helicobacter pylori</i> with the Synaptic Calcium Sensor Synaptotagmin 5, Correlate to Impaired Vesicle Recycling in SiMa Human ..." in: Journal of molecular neuroscience : MN, (2020) (PubMed).</p> <p>Wei, Oyarzabal, Huang, Balasubramanian, Sista, Simonian: "Development of a surface plasmon resonance biosensor for the identification of <i>Campylobacter jejuni</i>." in: Journal of microbiological methods, Vol. 69, Issue 1, pp. 78-85, (2007) (PubMed).</p>
-------------------	--

Images



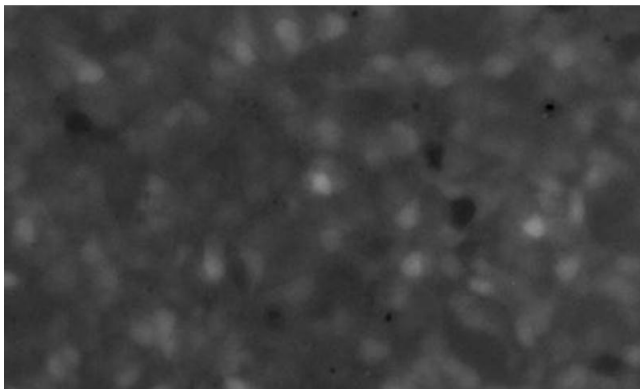
Immunofluorescence

Image 1. Fluorescence image of a culture of SiMa human neuroblastoma cells, pretreated for 12 h with 10 µg/ml of α-CJe, and after fixation stained for TH, revealing an intense cytoplasmic labeling in most of the cells



Western Blotting

Image 2. Western blot analysis of the cross-reactivity of antibodies directed against *Campylobacter jejuni* with different protein samples as provided by commercial HEK-293 overexpression lysates.



Immunofluorescence

Image 3. Image of the maximum plot of the fluorescence intensity (F/F₀) of a Fluo3-stained culture of SiMa human neuroblastoma cells pretreated for 12 h with 10 μ g/ml of α -CJe, and subsequently perfused for 50 s with 10 nmol/l of ACh in standard bath solution.