

Datasheet for ABIN2854380

**anti-LYPLA2 antibody**[Go to Product page](#)**1** Image

## Overview

Quantity:	100 µL
Target:	LYPLA2
Reactivity:	Human
Host:	Rabbit
Clonality:	Polyclonal
Conjugate:	This LYPLA2 antibody is un-conjugated
Application:	Western Blotting (WB)

## Product Details

Immunogen:	Recombinant protein encompassing a sequence within the center region of human LYPLA2. The exact sequence is proprietary.
Isotype:	IgG
Cross-Reactivity:	Human
Characteristics:	Rabbit polyclonal antibody to lysophospholipase II (lysophospholipase II) lysophospholipase II antibody [N1C3]
Purification:	Purified by antigen-affinity chromatography.
Grade:	KO Validated

## Target Details

Target:	LYPLA2
---------	--------

## Target Details

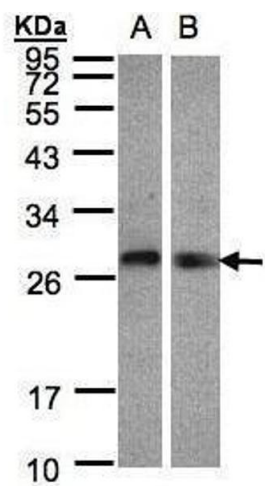
Alternative Name:	lysophospholipase 2 ( <a href="#">LYPLA2 Products</a> )
Background:	Lysophospholipases are enzymes that act on biological membranes to regulate the multifunctional lysophospholipids. There are alternatively spliced transcript variants described for this gene but the full length nature is not known yet.  Cellular Localization: Cytoplasm
Molecular Weight:	25 kDa
Gene ID:	11313
UniProt:	<a href="#">O95372</a>

## Application Details

Application Notes:	WB: 1:500-1:3000. Optimal dilutions/concentrations should be determined by the researcher. Not tested in other applications.
Comment:	Positive Control: HeLa Validation: KO/KD
Restrictions:	For Research Use only

## Handling

Format:	Liquid
Concentration:	1 mg/mL
Buffer:	0.1M Tris-Glycine ( pH 7), 10 % Glycerol, 0.01 % Thimerosal
Preservative:	Thimerosal (Merthiolate)
Precaution of Use:	This product contains Thimerosal (Merthiolate): a POISONOUS AND HAZARDOUS SUBSTANCE which should be handled by trained staff only.
Storage:	4 °C,-20 °C
Storage Comment:	Store as concentrated solution. Centrifuge briefly prior to opening vial. For short-term storage (1-2 weeks), store at 4°C. For long-term storage, aliquot and store at -20°C or below. Avoid multiple freeze-thaw cycles.



Western Blotting

**Image 1.** WB Image Sample(30 ug whole cell lysate) A:Hep G2 , B:Raji , 12% SDS PAGE antibody diluted at 1:1000