

Datasheet for ABIN2854381

**anti-ALDOC antibody****2** Images[Go to Product page](#)

## Overview

Quantity:	100 µL
Target:	ALDOC
Reactivity:	Human
Host:	Rabbit
Clonality:	Polyclonal
Conjugate:	This ALDOC antibody is un-conjugated
Application:	Western Blotting (WB), Immunohistochemistry (Frozen Sections) (IHC (fro))

## Product Details

Immunogen:	Recombinant protein encompassing a sequence within the center region of human Aldolase C. The exact sequence is proprietary.
Isotype:	IgG
Cross-Reactivity:	Human, Mouse, Rat
Characteristics:	Rabbit Polyclonal antibody to Aldolase C (aldolase C, fructose-bisphosphate) Aldolase C antibody [N1C1]
Purification:	Purified by antigen-affinity chromatography.

## Target Details

Target:	ALDOC
Alternative Name:	aldolase, fructose-bisphosphate C ( <a href="#">ALDOC Products</a> )

## Target Details

**Background:** This gene encodes a member of the class I fructose-biphosphate aldolase gene family. Expressed specifically in the hippocampus and Purkinje cells of the brain, the encoded protein is a glycolytic enzyme that catalyzes the reversible aldol cleavage of fructose-1,6-biphosphate and fructose 1-phosphate to dihydroxyacetone phosphate and either glyceraldehyde-3-phosphate or glyceraldehyde, respectively.

**Molecular Weight:** 39 kDa

**Gene ID:** 230

**UniProt:** [P09972](#)

## Application Details

**Application Notes:** WB: 1:500-1:3000. IHC-Fr: 1:100-1:1000. Optimal dilutions/concentrations should be determined by the researcher. Not tested in other applications.

**Comment:** Positive Control: U87-MG , MCF-7 , mouse brain , rat brain

**Restrictions:** For Research Use only

## Handling

**Format:** Liquid

**Concentration:** 1 mg/mL

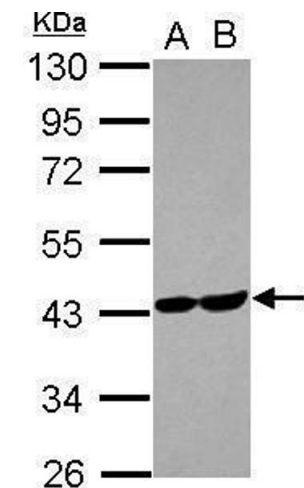
**Buffer:** 1XPBS ( pH 7), 1 % BSA, 20 % Glycerol, 0.01 % Thimerosal

**Preservative:** Thimerosal (Merthiolate)

**Precaution of Use:** This product contains Thimerosal (Merthiolate): a POISONOUS AND HAZARDOUS SUBSTANCE which should be handled by trained staff only.

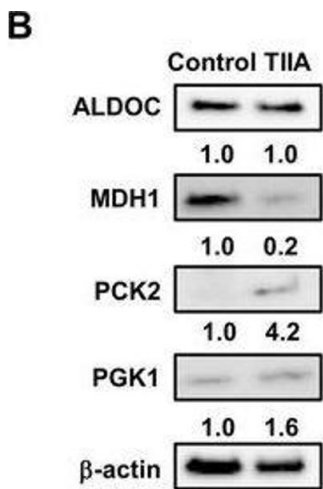
**Storage:** 4 °C,-20 °C

**Storage Comment:** Store as concentrated solution. Centrifuge briefly prior to opening vial. For short-term storage (1-2 weeks), store at 4°C. For long-term storage, aliquot and store at -20°C or below. Avoid multiple freeze-thaw cycles.



Western Blotting

**Image 1.** WB Image Sample (30 ug of whole cell lysate) A: U87-MG B: MCF-7 10% SDS PAGE antibody diluted at 1:1000



Western Blotting

**Image 2.** Treatment with TIIA changes the expression of glucose metabolism-related proteins in AGS cells. (A) The expression of iTRAQ-identified proteins, LDHB and ENO1 was estimated using western blotting. (B) The expression of ALDOC, MDH1, PCK2 and PGK1 in AGS cells treated with TIIA was estimated using western blotting. The levels of (C) tumor suppressor gene, p53, and the oncogene AKT, and (D) intracellular ATP, were examined in AGS cells treated with TIIA.  $\beta$ -actin was used as an internal control. - figure provided by CiteAb. Source: PMID25652794