

Datasheet for ABIN2854382
anti-EEF2 antibody (C-Term)[Go to Product page](#)

1 Image

Overview

Quantity:	100 µL
Target:	EEF2
Binding Specificity:	C-Term
Reactivity:	Human
Host:	Rabbit
Clonality:	Polyclonal
Conjugate:	This EEF2 antibody is un-conjugated
Application:	Western Blotting (WB)

Product Details

Immunogen:	Recombinant protein encompassing a sequence within the C-terminus region of human eEF2. The exact sequence is proprietary.
Isotype:	IgG
Cross-Reactivity:	Human
Characteristics:	Rabbit Polyclonal antibody to EEF2 (eukaryotic translation elongation factor 2) eEF2 antibody [C1C3]
Purification:	Purified by antigen-affinity chromatography.

Target Details

Target:	EEF2
---------	------

Target Details

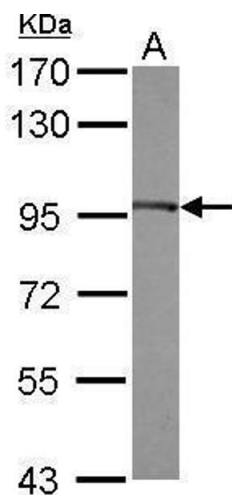
Alternative Name:	eukaryotic translation elongation factor 2 (EEF2 Products)
Background:	<p>This gene encodes a member of the GTP-binding translation elongation factor family. This protein is an essential factor for protein synthesis. It promotes the GTP-dependent translocation of the nascent protein chain from the A-site to the P-site of the ribosome. This protein is completely inactivated by EF-2 kinase phosphorylation.</p> <p>Cellular Localization: Cytoplasm</p>
Molecular Weight:	95 kDa
Gene ID:	1938
UniProt:	P13639
Pathways:	AMPK Signaling

Application Details

Application Notes:	WB: 1:500-1:3000. Optimal dilutions/concentrations should be determined by the researcher. Not tested in other applications.
Comment:	Positive Control: MCF-7
Restrictions:	For Research Use only

Handling

Format:	Liquid
Concentration:	0.94 mg/mL
Buffer:	0.1M Tris-Glycine (pH 7), 20 % Glycerol, 0.01 % Thimerosal
Preservative:	Thimerosal (Merthiolate)
Precaution of Use:	This product contains Thimerosal (Merthiolate): a POISONOUS AND HAZARDOUS SUBSTANCE which should be handled by trained staff only.
Storage:	4 °C,-20 °C
Storage Comment:	Store as concentrated solution. Centrifuge briefly prior to opening vial. For short-term storage (1-2 weeks), store at 4°C. For long-term storage, aliquot and store at -20°C or below. Avoid multiple freeze-thaw cycles.



Western Blotting

Image 1. WB Image Sample (30 ug of whole cell lysate) A:
MCF-7 7.5% SDS PAGE antibody diluted at 1:1000