



[Go to Product page](#)

Datasheet for ABIN2854391
anti-PDCD2 antibody

1 Image

Overview

Quantity:	100 µL
Target:	PDCD2
Reactivity:	Human
Host:	Rabbit
Clonality:	Polyclonal
Conjugate:	This PDCD2 antibody is un-conjugated
Application:	Western Blotting (WB)

Product Details

Immunogen:	Recombinant protein encompassing a sequence within the center region of human PDCD2. The exact sequence is proprietary.
Isotype:	IgG
Cross-Reactivity:	Human
Characteristics:	Rabbit Polyclonal antibody to PDCD2 (programmed cell death 2) PDCD2 antibody [N1C1]
Purification:	Purified by antigen-affinity chromatography.

Target Details

Target:	PDCD2
Alternative Name:	programmed cell death 2 (PDCD2 Products)

Target Details

Background: This gene encodes a nuclear protein expressed in a variety of tissues. The rat homolog, Rp8, is transiently expressed in immature thymocytes and is thought to be involved in programmed cell death. Expression of the human gene has been shown to be repressed by BCL6, a transcriptional repressor required for lymph node germinal center development, suggesting that BCL6 regulates apoptosis by its effects on PDCD2. This gene is closely linked on chromosome 6 to the gene for TBP, the TATA binding protein. Two transcripts encoding different proteins have been identified.

Cellular Localization: Nucleus

Molecular Weight: 39 kDa

Gene ID: 5134

UniProt: [Q16342](#)

Application Details

Application Notes: WB: 1:500-1:3000. Optimal dilutions/concentrations should be determined by the researcher.
Not tested in other applications.

Comment: Positive Control: H1299 , HCT116

Restrictions: For Research Use only

Handling

Format: Liquid

Concentration: 1 mg/mL

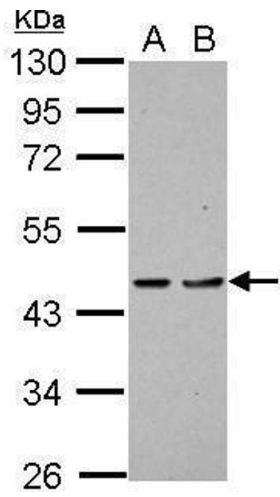
Buffer: 1XPBS (pH 7), 1 % BSA, 20 % Glycerol, 0.01 % Thimerosal

Preservative: Thimerosal (Merthiolate)

Precaution of Use: This product contains Thimerosal (Merthiolate): a POISONOUS AND HAZARDOUS SUBSTANCE which should be handled by trained staff only.

Storage: 4 °C,-20 °C

Storage Comment: Store as concentrated solution. Centrifuge briefly prior to opening vial. For short-term storage (1-2 weeks), store at 4°C. For long-term storage, aliquot and store at -20°C or below. Avoid multiple freeze-thaw cycles.



Western Blotting

Image 1. WB Image Sample (30 ug of whole cell lysate) A: H1299 B: HCT116 10% SDS PAGE antibody diluted at 1:1000