

Datasheet for ABIN2854393

anti-COL4a2 antibody[Go to Product page](#)**1** Image

Overview

Quantity:	100 µL
Target:	COL4a2 (COL4A2)
Reactivity:	Human
Host:	Rabbit
Clonality:	Polyclonal
Conjugate:	This COL4a2 antibody is un-conjugated
Application:	Western Blotting (WB)

Product Details

Immunogen:	Recombinant protein encompassing a sequence within the center region of human COL4A2. The exact sequence is proprietary.
Isotype:	IgG
Cross-Reactivity:	Human
Characteristics:	Rabbit polyclonal antibody to Collagen IV alpha2 (collagen, type IV, alpha 2) C04A2 antibody [N2N3]
Purification:	Purified by antigen-affinity chromatography.

Target Details

Target:	COL4a2 (COL4A2)
Alternative Name:	collagen type IV alpha 2 chain (COL4A2 Products)

Target Details

Background: This gene encodes one of the six subunits of type IV collagen, the major structural component of basement membranes. The C-terminal portion of the protein, known as canstatin, is an inhibitor of angiogenesis and tumor growth. Like the other members of the type IV collagen gene family, this gene is organized in a head-to-head conformation with another type IV collagen gene so that each gene pair shares a common promoter.

Cellular Localization: Secreted , extracellular space , extracellular matrix , basement membrane

Molecular Weight: 168 kDa

Gene ID: 1284

UniProt: [P08572](#)

Application Details

Application Notes: WB: 1:500-1:3000. Optimal dilutions/concentrations should be determined by the researcher.
Not tested in other applications.

Comment: Validation: Orthogonal

Restrictions: For Research Use only

Handling

Format: Liquid

Concentration: 1 mg/mL

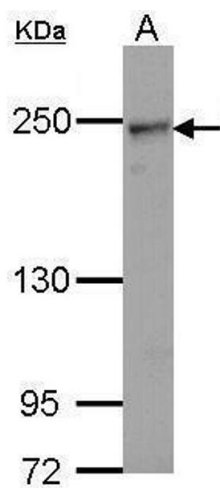
Buffer: 0.1M Tris-Glycine (pH 7), 10 % Glycerol, 0.01 % Thimerosal

Preservative: Thimerosal (Merthiolate)

Precaution of Use: This product contains Thimerosal (Merthiolate): a POISONOUS AND HAZARDOUS SUBSTANCE which should be handled by trained staff only.

Storage: 4 °C, -20 °C

Storage Comment: Store as concentrated solution. Centrifuge briefly prior to opening vial. For short-term storage (1-2 weeks), store at 4°C. For long-term storage, aliquot and store at -20°C or below. Avoid multiple freeze-thaw cycles.



Western Blotting

Image 1. WB Image Sample (30 ug of whole cell lysate) A:
Hela 5% SDS PAGE antibody diluted at 1:1000