

Datasheet for ABIN2854397
anti-PKC gamma antibody (N-Term)



[Go to Product page](#)

1 Image

Overview

Quantity:	100 µL
Target:	PKC gamma (PRKCG)
Binding Specificity:	N-Term
Reactivity:	Human
Host:	Rabbit
Clonality:	Polyclonal
Conjugate:	This PKC gamma antibody is un-conjugated
Application:	Western Blotting (WB), Immunohistochemistry (Frozen Sections) (IHC (fro))

Product Details

Immunogen:	Recombinant protein encompassing a sequence within the N-terminus region of human PKC gamma. The exact sequence is proprietary.
Isotype:	IgG
Cross-Reactivity:	Human, Mouse, Rat
Characteristics:	Rabbit polyclonal antibody to PKC gamma (protein kinase C, gamma) PKC gamma antibody
Purification:	Purified by antigen-affinity chromatography.

Target Details

Target:	PKC gamma (PRKCG)
---------	-------------------

Target Details

Alternative Name: [protein kinase C gamma \(PRKCG Products\)](#)

Background: Protein kinase C (PKC) is a family of serine- and threonine-specific protein kinases that can be activated by calcium and second messenger diacylglycerol. PKC family members phosphorylate a wide variety of protein targets and are known to be involved in diverse cellular signaling pathways. PKC also serve as major receptors for phorbol esters, a class of tumor promoters. Each member of the PKC family has a specific expression profile and is believed to play distinct roles in cells. The protein encoded by this gene is one of the PKC family members. This protein kinase is expressed solely in the brain and spinal cord and its localization is restricted to neurons. It has been demonstrated that several neuronal functions, including long term potentiation (LTP) and long term depression (LTD), specifically require this kinase. Knockout studies in mice also suggest that this kinase may be involved in neuropathic pain development. Defects in this protein have been associated with neurodegenerative disorder spinocerebellar ataxia-14 (SCA14).

Molecular Weight: 78 kDa

Gene ID: 5582

UniProt: [P05129](#)

Pathways: [WNT Signaling](#), [EGFR Signaling Pathway](#), [Neurotrophin Signaling Pathway](#), [Thyroid Hormone Synthesis](#), [Myometrial Relaxation and Contraction](#), [G-protein mediated Events](#), [Positive Regulation of Response to DNA Damage Stimulus](#), [Interaction of EGFR with phospholipase C-gamma](#), [Thromboxane A2 Receptor Signaling](#), [VEGF Signaling](#)

Application Details

Application Notes: WB: 1:500-1:3000. IHC-Fr: 1:100-1:1000. Optimal dilutions/concentrations should be determined by the researcher. Not tested in other applications.

Comment: Positive Control: Molt-4 , mouse brain , rat brain

Restrictions: For Research Use only

Handling

Format: Liquid

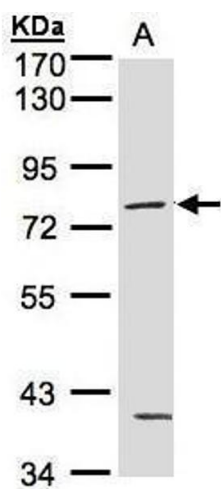
Concentration: 0.55 mg/mL

Buffer: 0.1M Tris-Glycine (pH 7), 10 % Glycerol, 0.01 % Thimerosal

Handling

Preservative:	Thimerosal (Merthiolate)
Precaution of Use:	This product contains Thimerosal (Merthiolate): a POISONOUS AND HAZARDOUS SUBSTANCE which should be handled by trained staff only.
Storage:	4 °C,-20 °C
Storage Comment:	Store as concentrated solution. Centrifuge briefly prior to opening vial. For short-term storage (1-2 weeks), store at 4°C. For long-term storage, aliquot and store at -20°C or below. Avoid multiple freeze-thaw cycles.

Images



Western Blotting

Image 1. WB Image Sample(30 ug whole cell lysate)

A:MOLT4 , 7.5% SDS PAGE antibody diluted at 1:500