

Datasheet for ABIN2854399  
**anti-MTMR2 antibody (C-Term)**[Go to Product page](#)

## 1 Image

## Overview

Quantity:	100 µL
Target:	MTMR2
Binding Specificity:	C-Term
Reactivity:	Human
Host:	Rabbit
Clonality:	Polyclonal
Conjugate:	This MTMR2 antibody is un-conjugated
Application:	Western Blotting (WB)

## Product Details

Immunogen:	Recombinant protein encompassing a sequence within the C-terminus region of human MTMR2. The exact sequence is proprietary.
Isotype:	IgG
Cross-Reactivity:	Human
Characteristics:	Rabbit polyclonal antibody to MTMR2 (myotubularin related protein 2) MTMR2 antibody [C1C3]
Purification:	Purified by antigen-affinity chromatography.
Grade:	KO Validated

## Target Details

Target:	MTMR2
Alternative Name:	myotubularin related protein 2 ( <a href="#">MTMR2 Products</a> )
Background:	<p>This gene is a member of the myotubularin family. The encoded protein possesses phosphatase activity towards phosphatidylinositol-3-phosphate and phosphatidylinositol-3,5-bisphosphate. Mutations in this gene are a cause of Charcot-Marie-Tooth disease type 4B, an autosomal recessive demyelinating neuropathy. Multiple alternatively spliced transcript variants have been found for this gene.</p> <p>Cellular Localization: Cytoplasm , Membrane, Peripheral membrane protein</p>
Molecular Weight:	73 kDa
Gene ID:	8898
UniProt:	<a href="#">Q13614</a>
Pathways:	<a href="#">Inositol Metabolic Process</a> , <a href="#">Synaptic Membrane</a>

## Application Details

Application Notes:	WB: 1:500-1:3000. Optimal dilutions/concentrations should be determined by the researcher. Not tested in other applications.
Comment:	Positive Control: U87-MG Validation: KO/KD
Restrictions:	For Research Use only

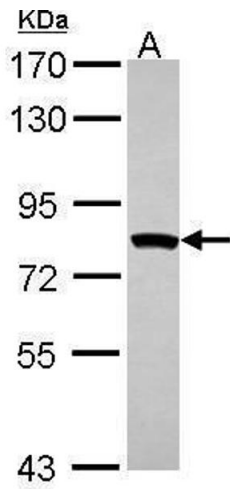
## Handling

Format:	Liquid
Concentration:	1 mg/mL
Buffer:	1XPBS ( pH 7), 1 % BSA, 20 % Glycerol, 0.01 % Thimerosal
Preservative:	Thimerosal (Merthiolate)
Precaution of Use:	This product contains Thimerosal (Merthiolate): a POISONOUS AND HAZARDOUS SUBSTANCE which should be handled by trained staff only.
Storage:	4 °C,-20 °C
Storage Comment:	Store as concentrated solution. Centrifuge briefly prior to opening vial. For short-term storage

Handling

(1-2 weeks), store at 4°C. For long-term storage, aliquot and store at -20°C or below. Avoid multiple freeze-thaw cycles.

Validation report #104426 for Immunohistochemistry (IHC)



**Western Blotting**

**Image 1.** WB Image Sample (30 ug of whole cell lysate) A:  
U87-MG 7.5% SDS PAGE antibody diluted at 1:1000