



[Go to Product page](#)

Datasheet for ABIN2854405
anti-BRPF1 antibody (N-Term)

1 Image

Overview

Quantity:	100 µL
Target:	BRPF1
Binding Specificity:	N-Term
Reactivity:	Human
Host:	Rabbit
Clonality:	Polyclonal
Conjugate:	This BRPF1 antibody is un-conjugated
Application:	Western Blotting (WB), Immunohistochemistry (Paraffin-embedded Sections) (IHC (p))

Product Details

Immunogen:	Recombinant protein encompassing a sequence within the N-terminus region of human Peregrin. The exact sequence is proprietary.
Isotype:	IgG
Cross-Reactivity:	Human, Mouse
Characteristics:	Rabbit polyclonal antibody to BRPF1 (bromodomain and PHD finger containing, 1) BRPF1 antibody [N1N2], N-term
Purification:	Purified by antigen-affinity chromatography.
Grade:	KO Validated

Target Details

Target:	BRPF1
Alternative Name:	bromodomain and PHD finger containing 1 (BRPF1 Products)
Background:	<p>The protein encoded by this gene is expressed ubiquitously and at the highest level in testes and spermatogonia. The protein is localized within nuclei, and it is very similar in structure to two zinc finger proteins, AF10 and AF17. It is suggested that these proteins form a family of regulatory proteins. Two alternatively spliced transcript variants encoding different isoforms have been found for this gene.</p> <p>Cellular Localization: Nucleus</p>
Molecular Weight:	137 kDa
Gene ID:	7862
UniProt:	P55201

Application Details

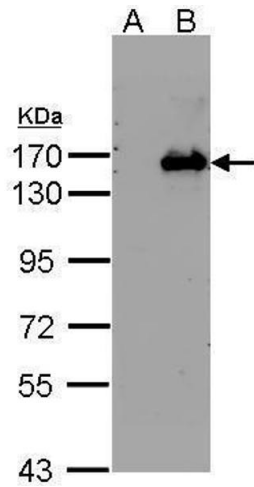
Application Notes:	<p>WB: 1:500-1:3000. Optimal dilutions/concentrations should be determined by the researcher.</p> <p>Not tested in other applications.</p>
Comment:	<p>Positive Control: BRPF1 transfected 293T</p> <p>Validation: KO/KD, Overexpression</p>
Restrictions:	For Research Use only

Handling

Format:	Liquid
Concentration:	0.19 mg/mL
Buffer:	1XPBS (pH 7), 1 % BSA, 20 % Glycerol, 0.025 % ProClin 300
Preservative:	ProClin
Precaution of Use:	This product contains ProClin: a POISONOUS AND HAZARDOUS SUBSTANCE which should be handled by trained staff only.
Storage:	4 °C,-20 °C
Storage Comment:	Store as concentrated solution. Centrifuge briefly prior to opening vial. For short-term storage (1-2 weeks), store at 4°C. For long-term storage, aliquot and store at -20°C or below. Avoid

multiple freeze-thaw cycles.

Validation report #104426 for Immunohistochemistry (IHC)



Western Blotting

Image 1. WB Image Western Blot analysis of BRPF1 expression in transfected 293T cell line by BRPF1 polyclonal antibody. A: Non-transfected lysate. B: BRPF1 transfected lysate. 7.5% SDS PAGE antibody diluted at 1:500