

Datasheet for ABIN2854408
anti-Arylsulfatase B antibody[Go to Product page](#)

1 Image

Overview

| | |
|--------------|--|
| Quantity: | 100 µL |
| Target: | Arylsulfatase B (ARSB) |
| Reactivity: | Human |
| Host: | Rabbit |
| Clonality: | Polyclonal |
| Conjugate: | This Arylsulfatase B antibody is un-conjugated |
| Application: | Western Blotting (WB) |

Product Details

| | |
|-------------------|--|
| Immunogen: | Recombinant protein encompassing a sequence within the center region of human ARSB. The exact sequence is proprietary. |
| Isotype: | IgG |
| Cross-Reactivity: | Human, Mouse, Rat |
| Characteristics: | Rabbit polyclonal antibody to ARSB (arylsulfatase B) ARSB antibody [N3C3] |
| Purification: | Affinity purified by Protein A. |

Target Details

| | |
|-------------------|---|
| Target: | Arylsulfatase B (ARSB) |
| Alternative Name: | arylsulfatase B (ARSB Products) |

Target Details

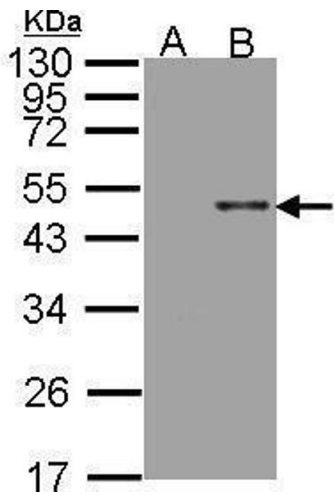
| | |
|-------------------|---|
| Background: | <p>Arylsulfatase B encoded by this gene belongs to the sulfatase family. The arylsulfatase B homodimer hydrolyzes sulfate groups of N-Acetyl-D-galactosamine, chondroitin sulfate, and dermatan sulfate. The protein is targeted to the lysosome. Mucopolysaccharidosis type VI is an autosomal recessive lysosomal storage disorder resulting from a deficiency of arylsulfatase B. Two alternatively spliced transcript variants encoding distinct isoforms have been found for this gene.</p> <p>Cellular Localization: Lysosome</p> |
| Molecular Weight: | 60 kDa |
| Gene ID: | 411 |
| UniProt: | P15848 |
| Pathways: | Glycosaminoglycan Metabolic Process |

Application Details

| | |
|--------------------|--|
| Application Notes: | <p>WB: 1:500-1:3000. Optimal dilutions/concentrations should be determined by the researcher.</p> <p>Not tested in other applications.</p> |
| Comment: | <p>Positive Control: ARSB transfected 293T cell , HeLa , HepG2 , mouse placenta , rat testis</p> <p>Validation: Overexpression</p> |
| Restrictions: | For Research Use only |

Handling

| | |
|--------------------|--|
| Format: | Liquid |
| Concentration: | 6.11 mg/mL |
| Buffer: | 0.1M Tris-Glycine (pH 7), 10 % Glycerol, 0.01 % Thimerosal |
| Preservative: | Thimerosal (Merthiolate) |
| Precaution of Use: | This product contains Thimerosal (Merthiolate): a POISONOUS AND HAZARDOUS SUBSTANCE which should be handled by trained staff only. |
| Storage: | 4 °C, -20 °C |
| Storage Comment: | Store as concentrated solution. Centrifuge briefly prior to opening vial. For short-term storage (1-2 weeks), store at 4°C. For long-term storage, aliquot and store at -20°C or below. Avoid multiple freeze-thaw cycles. |



Western Blotting

Image 1. WB Image Western Blot analysis of ARSB expression in transfected 293T cell line by ARSB polyclonal antibody. A: Non-transfected lysate. B: ARSB transfected lysate. 12% SDS PAGE antibody diluted at 1:500