

Datasheet for ABIN2854411  
**anti-Nidogen 1 antibody**[Go to Product page](#)

## 1 Image

## Overview

Quantity:	100 µL
Target:	Nidogen 1 (NID1)
Reactivity:	Human
Host:	Rabbit
Clonality:	Polyclonal
Conjugate:	This Nidogen 1 antibody is un-conjugated
Application:	Western Blotting (WB)

## Product Details

Immunogen:	Recombinant protein encompassing a sequence within the center region of human Nidogen 1. The exact sequence is proprietary.
Isotype:	IgG
Cross-Reactivity:	Human
Characteristics:	Rabbit polyclonal antibody to Nidogen (nidogen 1) Nidogen antibody [C1C3]
Purification:	Purified by antigen-affinity chromatography.

## Target Details

Target:	Nidogen 1 (NID1)
Alternative Name:	nidogen 1 ( <a href="#">NID1 Products</a> )

## Target Details

**Background:** This gene encodes a member of the nidogen family of basement membrane glycoproteins. The protein interacts with several other components of basement membranes, and may play a role in cell interactions with the extracellular matrix.

Cellular Localization: Secreted , extracellular space , extracellular matrix , basement membrane

**Molecular Weight:** 136 kDa

**Gene ID:** 4811

**UniProt:** [P14543](#)

## Application Details

**Application Notes:** WB: 1:500-1:3000. Optimal dilutions/concentrations should be determined by the researcher.  
Not tested in other applications.

**Comment:** Positive Control: HepG2

**Restrictions:** For Research Use only

## Handling

**Format:** Liquid

**Concentration:** 1 mg/mL

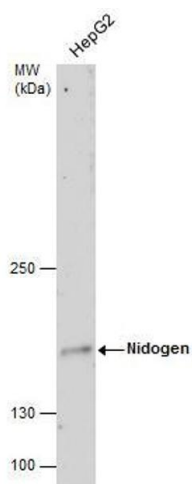
**Buffer:** 1XPBS ( pH 7), 20 % Glycerol, 0.01 % Thimerosal

**Preservative:** Thimerosal (Merthiolate)

**Precaution of Use:** This product contains Thimerosal (Merthiolate): a POISONOUS AND HAZARDOUS SUBSTANCE which should be handled by trained staff only.

**Storage:** 4 °C,-20 °C

**Storage Comment:** Store as concentrated solution. Centrifuge briefly prior to opening vial. For short-term storage (1-2 weeks), store at 4°C. For long-term storage, aliquot and store at -20°C or below. Avoid multiple freeze-thaw cycles.



#### Western Blotting

**Image 1.** WB Image Nidogen antibody detects Nidogen protein by western blot analysis. Whole cell extracts (30  $\mu$ g) was separated by 5 % SDS-PAGE, and blotted with Nidogen antibody , diluted by 1:500