

Datasheet for ABIN2854420

**anti-NR2C1 antibody**[Go to Product page](#)**1** Image

## Overview

Quantity:	100 µL
Target:	NR2C1
Reactivity:	Human
Host:	Rabbit
Clonality:	Polyclonal
Conjugate:	This NR2C1 antibody is un-conjugated
Application:	Western Blotting (WB)

## Product Details

Immunogen:	Recombinant protein encompassing a sequence within the center region of human TR2. The exact sequence is proprietary.
Isotype:	IgG
Cross-Reactivity:	Human
Characteristics:	Rabbit Polyclonal antibody to TR2 (nuclear receptor subfamily 2, group C, member 1) TR2 antibody
Purification:	Purified by antigen-affinity chromatography.

## Target Details

Target:	NR2C1
Alternative Name:	nuclear receptor subfamily 2 group C member 1 ( <a href="#">NR2C1 Products</a> )

## Target Details

Background:	<p>This gene encodes a nuclear hormone receptor characterized by a highly conserved DNA binding domain (DBD), a variable hinge region, and a carboxy-terminal ligand binding domain (LBD) that is typical for all members of the steroid/thyroid hormone receptor superfamily. This protein also belongs to a large family of ligand-inducible transcription factors that regulate gene expression by binding to specific DNA sequences within promoters of target genes. Multiple alternatively spliced transcript variants have been described, but the full-length nature of some of these variants has not been determined.</p> <p>Cellular Localization: Nucleus</p>
Molecular Weight:	67 kDa
Gene ID:	7181
UniProt:	<a href="#">P13056</a>
Pathways:	<a href="#">Nuclear Receptor Transcription Pathway</a> , <a href="#">Retinoic Acid Receptor Signaling Pathway</a> , <a href="#">Steroid Hormone Mediated Signaling Pathway</a>

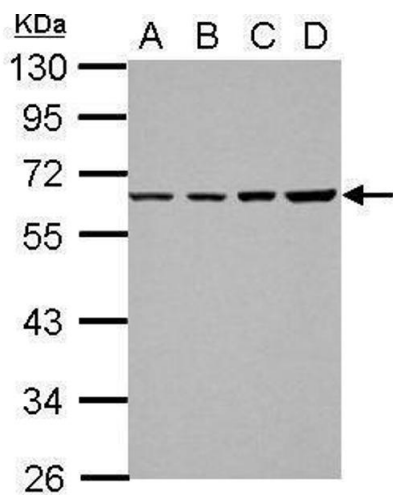
## Application Details

Application Notes:	WB: 1:500-1:3000. Optimal dilutions/concentrations should be determined by the researcher. Not tested in other applications.
Comment:	Positive Control: 293T , A431 , HeLa , HepG2
Restrictions:	For Research Use only

## Handling

Format:	Liquid
Concentration:	0.8 mg/mL
Buffer:	0.1M Tris-Glycine ( pH 7), 20 % Glycerol, 0.01 % Thimerosal
Preservative:	Thimerosal (Merthiolate)
Precaution of Use:	This product contains Thimerosal (Merthiolate): a POISONOUS AND HAZARDOUS SUBSTANCE which should be handled by trained staff only.
Storage:	4 °C,-20 °C
Storage Comment:	Store as concentrated solution. Centrifuge briefly prior to opening vial. For short-term storage (1-2 weeks), store at 4°C. For long-term storage, aliquot and store at -20°C or below. Avoid

multiple freeze-thaw cycles.



**Western Blotting**

**Image 1.** WB Image Sample (30 ug of whole cell lysate) A: 293T B: A431 C: HeLa D: HepG2 10% SDS PAGE antibody diluted at 1:1000