



[Go to Product page](#)

Datasheet for ABIN2854425
anti-SHMT1 antibody

1 Image

Overview

Quantity:	100 µL
Target:	SHMT1
Reactivity:	Human
Host:	Rabbit
Clonality:	Polyclonal
Conjugate:	This SHMT1 antibody is un-conjugated
Application:	Western Blotting (WB)

Product Details

Immunogen:	Recombinant protein encompassing a sequence within the center region of human SHMT1. The exact sequence is proprietary.
Isotype:	IgG
Cross-Reactivity:	Human
Characteristics:	Rabbit Polyclonal antibody to SHMT1 (serine hydroxymethyltransferase 1 (soluble)) SHMT1 antibody
Purification:	Purified by antigen-affinity chromatography.

Target Details

Target:	SHMT1
Alternative Name:	serine hydroxymethyltransferase 1 (SHMT1 Products)

Target Details

Background: This gene encodes the cellular form of serine hydroxymethyltransferase, a pyridoxal phosphate-containing enzyme that catalyzes the reversible conversion of serine and tetrahydrofolate to glycine and 5,10-methylene tetrahydrofolate. This reaction provides one carbon units for synthesis of methionine, thymidylate, and purines in the cytoplasm. This gene is located within the Smith-Magenis syndrome region on chromosome 17. Alternative splicing of this gene results in 2 transcript variants encoding 2 different isoforms. Additional transcript variants have been described, but their biological validity has not been determined.

Cellular Localization: Cytoplasm

Molecular Weight: 53 kDa

Gene ID: 6470

UniProt: [P34896](#)

Application Details

Application Notes: WB: 1:500-1:3000. Optimal dilutions/concentrations should be determined by the researcher. Not tested in other applications.

Comment: Positive Control: U87-MG

Restrictions: For Research Use only

Handling

Format: Liquid

Concentration: 1 mg/mL

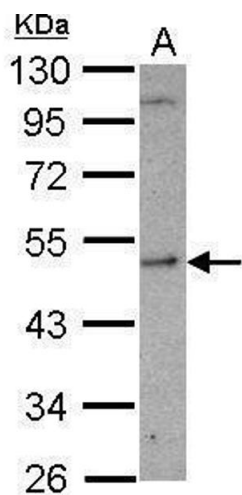
Buffer: 1XPBS (pH 7), 1 % BSA, 20 % Glycerol, 0.01 % Thimerosal

Preservative: Thimerosal (Merthiolate)

Precaution of Use: This product contains Thimerosal (Merthiolate): a POISONOUS AND HAZARDOUS SUBSTANCE which should be handled by trained staff only.

Storage: 4 °C,-20 °C

Storage Comment: Store as concentrated solution. Centrifuge briefly prior to opening vial. For short-term storage (1-2 weeks), store at 4°C. For long-term storage, aliquot and store at -20°C or below. Avoid multiple freeze-thaw cycles.



Western Blotting

Image 1. WB Image Sample (30 ug of whole cell lysate) A:
U87-MG 10% SDS PAGE antibody diluted at 1:1000