

Datasheet for ABIN2854426
anti-KIF14 antibody (N-Term)[Go to Product page](#)[1 Image](#)[1 Publication](#)

Overview

Quantity:	100 µL
Target:	KIF14
Binding Specificity:	N-Term
Reactivity:	Human
Host:	Rabbit
Clonality:	Polyclonal
Conjugate:	This KIF14 antibody is un-conjugated
Application:	Western Blotting (WB)

Product Details

Immunogen:	Recombinant protein encompassing a sequence within the N-terminus region of human KIF14. The exact sequence is proprietary.
Isotype:	IgG
Cross-Reactivity:	Human
Characteristics:	Rabbit Polyclonal antibody to KIF14 (kinesin family member 14) KIF14 antibody [N1N2], N-term
Purification:	Purified by antigen-affinity chromatography.

Target Details

Target:	KIF14
---------	-------

Target Details

Alternative Name:	kinesin family member 14 (KIF14 Products)
Background:	KIF14 is a member of the kinesin superfamily of microtubule-associated motors (see MIM 148760) that play important roles in intracellular transport and cell division (Nakagawa et al., 1997 [PubMed 9275178]).[supplied by OMIM] Cellular Localization: Nucleus , Cytoplasm , Spindle
Molecular Weight:	186 kDa
Gene ID:	9928
UniProt:	Q15058

Application Details

Application Notes:	WB: 1:500-1:3000. Optimal dilutions/concentrations should be determined by the researcher. Not tested in other applications.
Comment:	Positive Control: Jurkat , Raji
Restrictions:	For Research Use only

Handling

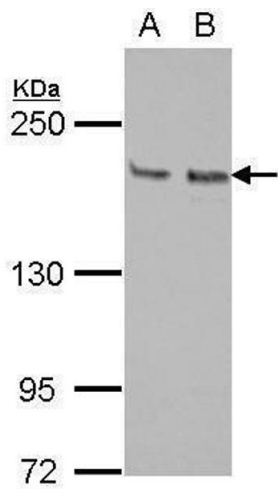
Format:	Liquid
Concentration:	1 mg/mL
Buffer:	1XPBS (pH 7), 1 % BSA, 20 % Glycerol, 0.01 % Thimerosal
Preservative:	Thimerosal (Merthiolate)
Precaution of Use:	This product contains Thimerosal (Merthiolate): a POISONOUS AND HAZARDOUS SUBSTANCE which should be handled by trained staff only.
Storage:	4 °C,-20 °C
Storage Comment:	Store as concentrated solution. Centrifuge briefly prior to opening vial. For short-term storage (1-2 weeks), store at 4°C. For long-term storage, aliquot and store at -20°C or below. Avoid multiple freeze-thaw cycles.

Publications

Product cited in:	Qi, Liu, Zhang, Guo: "Platelets induce increased estrogen production through NF-κB and TGF-β1
-------------------	---

signaling pathways in endometriotic stromal cells." in: **Scientific reports**, Vol. 10, Issue 1, pp. 1281, (2020) ([PubMed](#)).

Validation report #104342 for Multiplex Immunohistochemistry (mIHC)



Western Blotting

Image 1. WB Image Sample (30 ug of whole cell lysate) A: Jurkat B: Raji 5% SDS PAGE antibody diluted at 1:1000