

Datasheet for ABIN2854430

**anti-ARCN1 antibody****2** Images[Go to Product page](#)

## Overview

Quantity:	100 µL
Target:	ARCN1
Reactivity:	Human
Host:	Rabbit
Clonality:	Polyclonal
Conjugate:	This ARCN1 antibody is un-conjugated
Application:	Western Blotting (WB), Immunofluorescence (IF), Immunohistochemistry (Paraffin-embedded Sections) (IHC (p)), Immunocytochemistry (ICC), Immunohistochemistry (Frozen Sections) (IHC (fro))

## Product Details

Immunogen:	Recombinant protein encompassing a sequence within the center region of human COPD. The exact sequence is proprietary.
Isotype:	IgG
Cross-Reactivity:	Human, Mouse
Characteristics:	Rabbit Polyclonal antibody to COPD (archain 1) COPD antibody
Purification:	Purified by antigen-affinity chromatography.
Grade:	KO Validated

## Target Details

Target:	ARCN1
Alternative Name:	archain 1 ( <a href="#">ARCN1 Products</a> )
Background:	<p>This gene maps in a region, which include the mixed lineage leukemia and Friend leukemia virus integration 1 genes, where multiple disease-associated chromosome translocations occur. It is an intracellular protein. Archain sequences are well conserved among eukaryotes and this protein may play a fundamental role in eukaryotic cell biology. It has similarities to heat shock proteins and clathrin-associated proteins, and may be involved in vesicle structure or trafficking.</p> <p>Cellular Localization: Cytoplasm , Golgi apparatus membrane, Peripheral membrane protein, Cytoplasmic side , Cytoplasmic vesicle , COPI-coated vesicle membrane, Peripheral membrane protein, Cytoplasmic side , Cytoplasm , Golgi apparatus membrane , Cytoplasmic vesicle , COPI-coa</p>
Molecular Weight:	57 kDa
Gene ID:	372
UniProt:	<a href="#">P48444</a>

## Application Details

Application Notes:	WB: 1:500-1:3000. ICC/IF: 1:100-1:1000. IHC-P: 1:100-1:1000. IHC-Fr: 1:100-1:1000. Optimal dilutions/concentrations should be determined by the researcher. Not tested in other applications.
Comment:	Positive Control: H1299 , HepG2 , 293T Validation: KO/KD
Restrictions:	For Research Use only

## Handling

Format:	Liquid
Concentration:	0.21 mg/mL
Buffer:	0.1M Tris-Glycine ( pH 7), 20 % Glycerol, 0.01 % Thimerosal
Preservative:	Thimerosal (Merthiolate)
Precaution of Use:	This product contains Thimerosal (Merthiolate): a POISONOUS AND HAZARDOUS SUBSTANCE

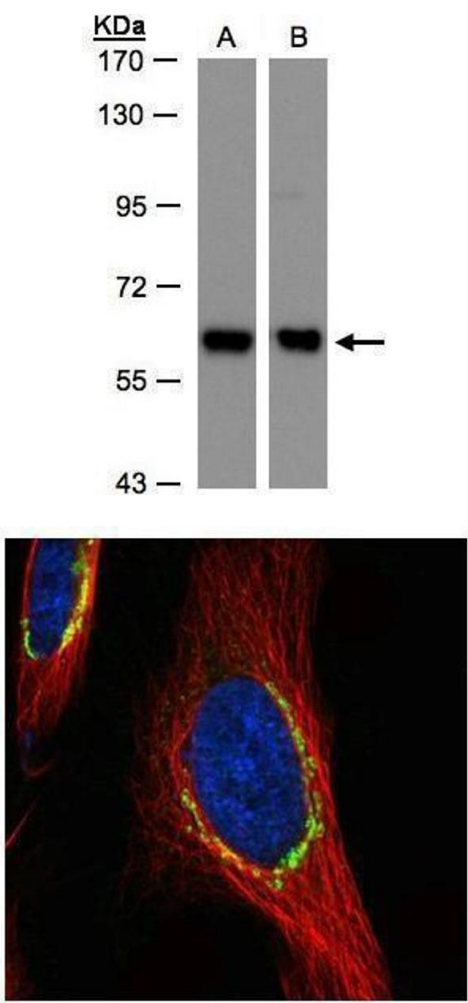
Handling

which should be handled by trained staff only.

Storage: 4 °C,-20 °C

Storage Comment: Store as concentrated solution. Centrifuge briefly prior to opening vial. For short-term storage (1-2 weeks), store at 4°C. For long-term storage, aliquot and store at -20°C or below. Avoid multiple freeze-thaw cycles.

Validation report #104342 for Multiplex Immunohistochemistry (mIHC)



Western Blotting

**Image 1.** WB Image Sample(30 ug whole cell lysate)  
A:H1299 B:Hep G2, 7.5% SDS PAGE antibody diluted at 1:500

Immunofluorescence

**Image 2.** ICC/IF Image Confocal immunofluorescence analysis (Olympus FV10i) of paraformaldehyde-fixed HeLa, using COPD, antibody (green) at 1:500 dilution. Alpha-tubulin filaments were labeled with (red) at 1:2500.