



Datasheet for ABIN2854431  
**anti-PHF20 antibody (N-Term)**



[Go to Product page](#)

1 Image

### Overview

Quantity:	100 µL
Target:	PHF20
Binding Specificity:	N-Term
Reactivity:	Human
Host:	Rabbit
Clonality:	Polyclonal
Conjugate:	This PHF20 antibody is un-conjugated
Application:	Western Blotting (WB)

### Product Details

Immunogen:	Recombinant protein encompassing a sequence within the N-terminus region of human PHF20. The exact sequence is proprietary.
Isotype:	IgG
Cross-Reactivity:	Human
Characteristics:	Rabbit polyclonal antibody to PHD finger protein 20 (PHD finger protein 20) PHD finger protein 20 antibody [N1N2], N-term
Purification:	Purified by antigen-affinity chromatography.

### Target Details

Target:	PHF20
---------	-------

## Target Details

---

Alternative Name: PHD finger protein 20 ([PHF20 Products](#))

Background: Possible transcription factor.

Cellular Localization: Nucleus

Molecular Weight: 115 kDa

Gene ID: 51230

UniProt: [Q9BVI0](#)

## Application Details

---

Application Notes: WB: 1:500-1:3000. Optimal dilutions/concentrations should be determined by the researcher.  
Not tested in other applications.

Comment: Positive Control: Molt-4

Restrictions: For Research Use only

## Handling

---

Format: Liquid

Concentration: 1 mg/mL

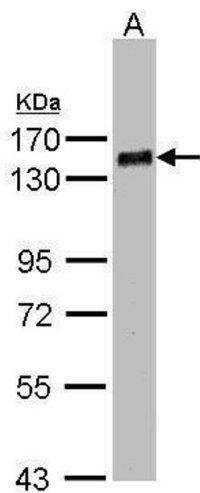
Buffer: 0.1M Tris-Glycine ( pH 7), 10 % Glycerol, 0.01 % Thimerosal

Preservative: Thimerosal (Merthiolate)

Precaution of Use: This product contains Thimerosal (Merthiolate): a POISONOUS AND HAZARDOUS SUBSTANCE which should be handled by trained staff only.

Storage: 4 °C, -20 °C

Storage Comment: Store as concentrated solution. Centrifuge briefly prior to opening vial. For short-term storage (1-2 weeks), store at 4°C. For long-term storage, aliquot and store at -20°C or below. Avoid multiple freeze-thaw cycles.



#### Western Blotting

**Image 1.** WB Image Sample(30 ug whole cell lysate)  
A:MOLT4 , 7.5% SDS PAGE antibody diluted at 1:1000