

Datasheet for ABIN2854438

anti-ENPP1 antibody[Go to Product page](#)

3 Images

1 Publication

Overview

Quantity:	100 µL
Target:	ENPP1
Reactivity:	Human
Host:	Rabbit
Clonality:	Polyclonal
Conjugate:	This ENPP1 antibody is un-conjugated
Application:	Western Blotting (WB)

Product Details

Immunogen:	Recombinant protein encompassing a sequence within the center region of human ENPP1. The exact sequence is proprietary.
Isotype:	IgG
Cross-Reactivity:	Human
Characteristics:	Rabbit Polyclonal antibody to ENPP1 (ectonucleotide pyrophosphatase/phosphodiesterase 1) ENPP1 antibody [N2C2], Internal
Purification:	Purified by antigen-affinity chromatography.
Grade:	KO Validated

Target Details

Target:	ENPP1
---------	-------

Target Details

Alternative Name:	ectonucleotide pyrophosphatase/phosphodiesterase 1 (ENPP1 Products)
Background:	This gene is a member of the ecto-nucleotide pyrophosphatase/phosphodiesterase (ENPP) family. The encoded protein is a type II transmembrane glycoprotein comprising two identical disulfide-bonded subunits. This protein has broad specificity and cleaves a variety of substrates, including phosphodiester bonds of nucleotides and nucleotide sugars and pyrophosphate bonds of nucleotides and nucleotide sugars. This protein may function to hydrolyze nucleoside 5' triphosphates to their corresponding monophosphates and may also hydrolyze diadenosine polyphosphates. Mutations in this gene have been associated with 'idiopathic' infantile arterial calcification, ossification of the posterior longitudinal ligament of the spine (OPLL), and insulin resistance.
Molecular Weight:	105 kDa
Gene ID:	5167
UniProt:	P22413
Pathways:	Regulation of Carbohydrate Metabolic Process

Application Details

Application Notes:	WB: 1:500-1:3000. Optimal dilutions/concentrations should be determined by the researcher. Not tested in other applications.
Comment:	Positive Control: HepG2 , human liver Validation: KO/KD, Overexpression
Restrictions:	For Research Use only

Handling

Format:	Liquid
Concentration:	0.14 mg/mL
Buffer:	1XPBS (pH 7), 1 % BSA, 20 % Glycerol, 0.025 % ProClin 300
Preservative:	ProClin
Precaution of Use:	This product contains ProClin: a POISONOUS AND HAZARDOUS SUBSTANCE which should be handled by trained staff only.
Storage:	4 °C,-20 °C

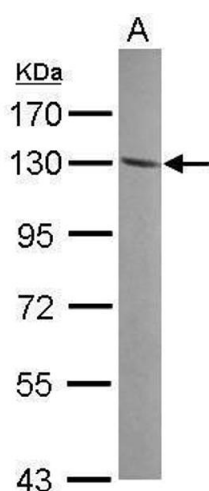
Handling

Storage Comment: Store as concentrated solution. Centrifuge briefly prior to opening vial. For short-term storage (1-2 weeks), store at 4°C. For long-term storage, aliquot and store at -20°C or below. Avoid multiple freeze-thaw cycles.

Publications

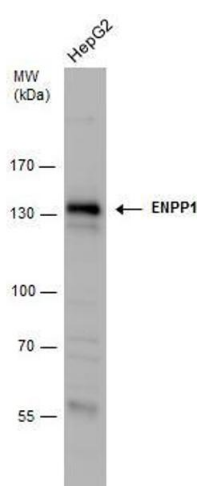
Product cited in: Galmozzi, Kok, Kim, Montenegro-Burke, Lee, Spreafico, Mosure, Albert, Cintron-Colon, Godio, Webb, Conti, Solt, Kojetin, Parker, Peluso, Pru, Siuzdak, Cravatt, Saez: "PGRMC2 is an intracellular haem chaperone critical for adipocyte function." in: **Nature**, Vol. 576, Issue 7785, pp. 138-142, (2020) ([PubMed](#)).

Validation report #104404 for Cleavage Under Targets and Release Using Nuclease (CUT&RUN)



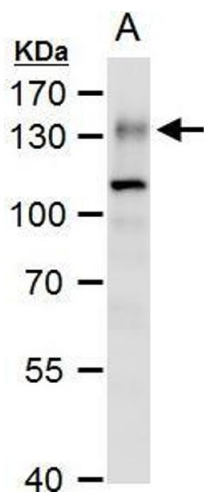
Western Blotting

Image 1. WB Image Sample (30 ug of whole cell lysate) A: A549 7.5% SDS PAGE antibody diluted at 1:1000



Western Blotting

Image 2. WB Image ENPP1 antibody detects ENPP1 protein by western blot analysis. Whole cell extracts (30 µg) was separated by 7.5% SDS-PAGE, and the membrane was blotted with ENPP1 antibody, at a dilution of 1:500.



Western Blotting

Image 3. WB Image ENPP1 antibody [N2C2], Internal detects ENPP1 protein by western blot analysis. A. 30 µg human liver extract 7.5 % SDS-PAGE ENPP1 antibody [N2C2], Internal , dilution: 1:500