

Datasheet for ABIN2854439

anti-Asparagine Synthetase antibody**1** Image[Go to Product page](#)

Overview

Quantity:	100 µL
Target:	Asparagine Synthetase (ASNS)
Reactivity:	Human
Host:	Rabbit
Clonality:	Polyclonal
Conjugate:	This Asparagine Synthetase antibody is un-conjugated
Application:	Western Blotting (WB)

Product Details

Immunogen:	Recombinant protein encompassing a sequence within the center region of human Asparagine synthetase. The exact sequence is proprietary.
Isotype:	IgG
Cross-Reactivity:	Human
Characteristics:	Rabbit Polyclonal antibody to Asparagine synthetase (asparagine synthetase) Asparagine synthetase antibody [N3C3]
Purification:	Purified by antigen-affinity chromatography.

Target Details

Target:	Asparagine Synthetase (ASNS)
Alternative Name:	asparagine synthetase (glutamine-hydrolyzing) (ASNS Products)

Target Details

Background: The protein encoded by this gene is involved in the synthesis of asparagine. This gene complements a mutation in the temperature-sensitive hamster mutant ts11, which blocks progression through the G1 phase of the cell cycle at nonpermissive temperature. There are three alternatively spliced transcript variants encoding the same protein described for this gene.

Molecular Weight: 64 kDa

Gene ID: 440

UniProt: [P08243](#)

Pathways: [ER-Nucleus Signaling](#)

Application Details

Application Notes: WB: 1:500-1:3000. Optimal dilutions/concentrations should be determined by the researcher.
Not tested in other applications.

Comment: Positive Control: A431

Restrictions: For Research Use only

Handling

Format: Liquid

Concentration: 1 mg/mL

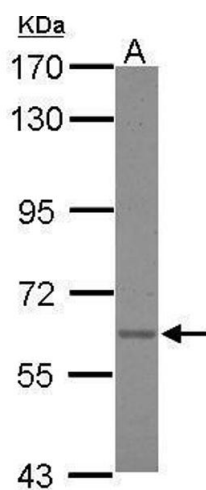
Buffer: 1XPBS (pH 7), 1 % BSA, 20 % Glycerol, 0.01 % Thimerosal

Preservative: Thimerosal (Merthiolate)

Precaution of Use: This product contains Thimerosal (Merthiolate): a POISONOUS AND HAZARDOUS SUBSTANCE which should be handled by trained staff only.

Storage: 4 °C, -20 °C

Storage Comment: Store as concentrated solution. Centrifuge briefly prior to opening vial. For short-term storage (1-2 weeks), store at 4°C. For long-term storage, aliquot and store at -20°C or below. Avoid multiple freeze-thaw cycles.



Western Blotting

Image 1. WB Image Sample (30 ug of whole cell lysate) A:
A431 7.5% SDS PAGE antibody diluted at 1:1000