

Datasheet for ABIN2854440
anti-ABL2 antibody (Center)[Go to Product page](#)

1 Image

Overview

Quantity:	100 µL
Target:	ABL2
Binding Specificity:	Center
Reactivity:	Human
Host:	Rabbit
Clonality:	Polyclonal
Conjugate:	This ABL2 antibody is un-conjugated
Application:	Western Blotting (WB)

Product Details

Immunogen:	Recombinant protein encompassing a sequence within the center region of human ABL2. The exact sequence is proprietary.
Isotype:	IgG
Cross-Reactivity:	Cow (Bovine)
Cross-Reactivity (Details):	Bovine (100 %)
Characteristics:	Rabbit Polyclonal antibody to ABL2 (v-abl Abelson murine leukemia viral oncogene homolog 2 (arg, Abelson-related gene)) ABL2 antibody [N1N3]
Purification:	Purified by antigen-affinity chromatography.

Target Details

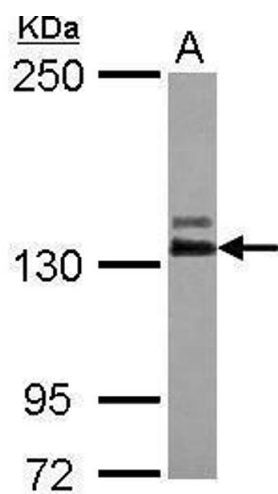
Target:	ABL2
Alternative Name:	ABL2 (ABL2 Products)
Background:	<p>This gene encodes a member of the Abelson family of nonreceptor tyrosine protein kinase. The protein is highly similar to the ABL1 protein, including the tyrosine kinase, SH2 and SH3 domains, and has a role in cytoskeletal rearrangements by its C-terminal F-actin- and microtubule-binding sequences. This gene is expressed in both normal and tumor cells, and is involved in translocation with the ETV6 gene in leukemia. Multiple alternatively spliced transcript variants encoding different protein isoforms have been found for this gene.</p> <p>Cellular Localization: Cytoplasm , cytoskeleton</p>
Molecular Weight:	128 kDa
Gene ID:	27

Application Details

Application Notes:	<p>Suggested dilution Reference Western blot 1:500-1:3000* Not tested in other applications.</p> <p>*Optimal dilutions/concentrations should be determined by the researcher.Suggested dilutionReferenceWestern blot1:500-1:3000*</p>
Comment:	Positive Control: IMR32
Restrictions:	For Research Use only

Handling

Format:	Liquid
Concentration:	0.77 mg/mL
Buffer:	0.1M Tris, 0.1M Glycine, 20 % Glycerol (pH 7). 0.01 % Thimerosal was added as a preservative.
Preservative:	Thimerosal (Merthiolate)
Precaution of Use:	This product contains Thimerosal (Merthiolate): a POISONOUS AND HAZARDOUS SUBSTANCE which should be handled by trained staff only.
Storage:	-20 °C
Storage Comment:	Keep as concentrated solution. Aliquot and store at -20°C or below. Avoid multiple freeze-thaw cycles.



Western Blotting

Image 1. WB Image Sample (30 ug of whole cell lysate) A:
IMR32 5% SDS PAGE antibody diluted at 1:1000