

Datasheet for ABIN2854442
anti-Elf4 antibody (Center)[Go to Product page](#)

1 Image

Overview

Quantity:	100 µL
Target:	Elf4
Binding Specificity:	Center
Reactivity:	Human
Host:	Rabbit
Clonality:	Polyclonal
Conjugate:	This Elf4 antibody is un-conjugated
Application:	Western Blotting (WB)

Product Details

Immunogen:	Recombinant protein encompassing a sequence within the center region of human ELF4. The exact sequence is proprietary.
Isotype:	IgG
Cross-Reactivity:	Mouse (Murine), Rat (Rattus), Cow (Bovine)
Cross-Reactivity (Details):	Mouse (80 %), Rat (81 %), Bovine (92 %)
Characteristics:	Rabbit Polyclonal antibody to ELF4 (E74-like factor 4 (ets domain transcription factor)) ELF4 antibody [N1N3]
Purification:	Purified by antigen-affinity chromatography.

Target Details

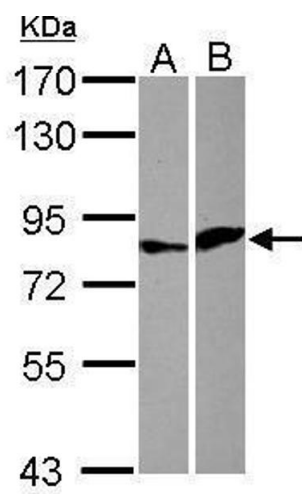
Target:	Elf4
Alternative Name:	ELF4 (Elf4 Products)
Background:	ELF4 is a member of the ETS (see MIM 164720) gene family of transcription factors (Aryee et al., 1998 [PubMed 9524226]). ELF4 is involved in inducing cell cycle arrest in naive CD8+ T cells (Yamada et al., 2009 [PubMed 19412182]).[supplied by OMIM] Cellular Localization: Nucleus
Molecular Weight:	71 kDa
Gene ID:	2000
Pathways:	Positive Regulation of Endopeptidase Activity

Application Details

Application Notes:	Suggested dilution Reference Western blot 1:500-1:3000* Not tested in other applications. *Optimal dilutions/concentrations should be determined by the researcher.Suggested dilutionReferenceWestern blot1:500-1:3000*
Comment:	Positive Control: A549 , HeLa , HepG2 , HCT116
Restrictions:	For Research Use only

Handling

Format:	Liquid
Concentration:	1 mg/mL
Buffer:	1XPBS, 1 % BSA, 20 % Glycerol (pH 7). 0.01 % Thimerosal was added as a preservative.
Preservative:	Thimerosal (Merthiolate)
Precaution of Use:	This product contains Thimerosal (Merthiolate): a POISONOUS AND HAZARDOUS SUBSTANCE which should be handled by trained staff only.
Storage:	-20 °C
Storage Comment:	Keep as concentrated solution. Aliquot and store at -20°C or below. Avoid multiple freeze-thaw cycles.



Western Blotting

Image 1. WB Image Sample (30 ug of whole cell lysate) A: HeLa B: HCT116 7.5% SDS PAGE antibody diluted at 1:1000