

Datasheet for ABIN2854446

anti-ZNF24 antibody[Go to Product page](#)**1** Image

Overview

Quantity:	100 µL
Target:	ZNF24
Reactivity:	Human
Host:	Rabbit
Clonality:	Polyclonal
Conjugate:	This ZNF24 antibody is un-conjugated
Application:	Western Blotting (WB)

Product Details

Immunogen:	Recombinant protein encompassing a sequence within the center region of human ZNF24. The exact sequence is proprietary.
Isotype:	IgG
Cross-Reactivity:	Human
Characteristics:	Rabbit Polyclonal antibody to ZNF24 (zinc finger protein 24) ZNF24 antibody
Purification:	Purified by antigen-affinity chromatography.

Target Details

Target:	ZNF24
Alternative Name:	zinc finger protein 24 (ZNF24 Products)

Target Details

Background: Transcription factor required for myelination of differentiated oligodendrocytes. Required for the conversion of oligodendrocytes from the premyelinating to the myelinating state. In the developing central nervous system (CNS), involved in the maintenance in the progenitor stage by promoting the cell cycle. Specifically bind to the 5'-TCAT-3' DNA sequence (By similarity). Has transcription repressor activity in vitro.

Cellular Localization: Nucleus

Molecular Weight: 42 kDa

Gene ID: 7572

UniProt: [P17028](#)

Application Details

Application Notes: WB: 1:500-1:3000. Optimal dilutions/concentrations should be determined by the researcher. Not tested in other applications.

Comment: Positive Control: U87-MG , SK-N-SH , IMR-32 , SK-N-AS

Restrictions: For Research Use only

Handling

Format: Liquid

Concentration: 1 mg/mL

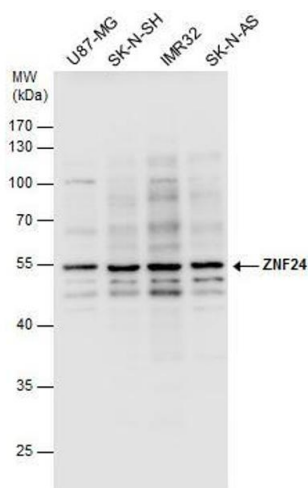
Buffer: 1XPBS (pH 7), 20 % Glycerol, 0.01 % Thimerosal

Preservative: Thimerosal (Merthiolate)

Precaution of Use: This product contains Thimerosal (Merthiolate): a POISONOUS AND HAZARDOUS SUBSTANCE which should be handled by trained staff only.

Storage: 4 °C, -20 °C

Storage Comment: Store as concentrated solution. Centrifuge briefly prior to opening vial. For short-term storage (1-2 weeks), store at 4°C. For long-term storage, aliquot and store at -20°C or below. Avoid multiple freeze-thaw cycles.



Western Blotting

Image 1. WB Image ZNF24 antibody detects ZNF24 protein by western blot analysis. Various whole cell extracts (30 µg) were separated by 10% SDS-PAGE, and the membrane was blotted with ZNF24 antibody , diluted by 1:1000.