

Datasheet for ABIN2854447

anti-ECEL1 antibody[Go to Product page](#)**1** Image

Overview

Quantity:	100 µL
Target:	ECEL1
Reactivity:	Human
Host:	Rabbit
Clonality:	Polyclonal
Conjugate:	This ECEL1 antibody is un-conjugated
Application:	Western Blotting (WB)

Product Details

Immunogen:	Recombinant protein encompassing a sequence within the center region of human ECEL1. The exact sequence is proprietary.
Isotype:	IgG
Cross-Reactivity:	Human
Characteristics:	Rabbit polyclonal antibody to ECEL1 (endothelin converting enzyme-like 1) ECEL1 antibody [N3C2], Internal
Purification:	Purified by antigen-affinity chromatography.

Target Details

Target:	ECEL1
Alternative Name:	endothelin converting enzyme like 1 (ECEL1 Products)

Target Details

Background: This gene encodes a member of the M13 family of endopeptidases. In general, M13 family members are zinc-containing type II integral-membrane proteins that are important regulators of neuropeptide and peptide hormone activity. This gene is expressed specifically in the central nervous system and its protein localizes predominately to the endoplasmic reticulum or, in trace amounts, to the cell surface. Disruption of this gene in mouse embryonic stem cells results in neonatal lethality due to respiratory failure shortly after birth. Based on the specific expression of this gene and the phenotype of the gene deficiency in mouse embryos, it is suggested that this protein plays a critical role in neural regulation of the respiratory system. This gene has multiple pseudogenes.

Cellular Localization: Membrane

Molecular Weight: 88 kDa

Gene ID: 9427

UniProt: [O95672](#)

Application Details

Application Notes: WB: 1:500-1:3000. Optimal dilutions/concentrations should be determined by the researcher. Not tested in other applications.

Comment: Positive Control: ECEL1 transfected 293T

Restrictions: For Research Use only

Handling

Format: Liquid

Concentration: 0.4 mg/mL

Buffer: 0.1M Tris-Glycine (pH 7), 10 % Glycerol, 0.01 % Thimerosal

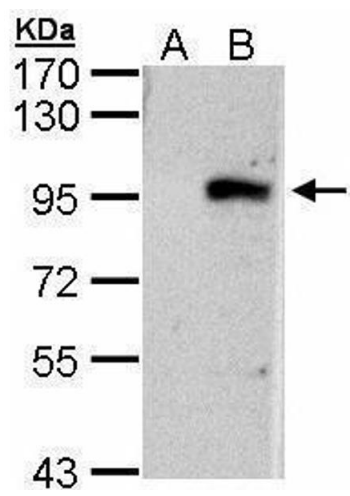
Preservative: Thimerosal (Merthiolate)

Precaution of Use: This product contains Thimerosal (Merthiolate): a POISONOUS AND HAZARDOUS SUBSTANCE which should be handled by trained staff only.

Storage: 4 °C,-20 °C

Storage Comment: Store as concentrated solution. Centrifuge briefly prior to opening vial. For short-term storage (1-2 weeks), store at 4°C. For long-term storage, aliquot and store at -20°C or below. Avoid

multiple freeze-thaw cycles.



Western Blotting

Image 1. WB Image Western Blot analysis of ECEL1 expression in transfected 293T cell line by ECEL1 polyclonal antibody. A: Non-transfected lysate. B: ECEL1 transfected lysate. 7.5% SDS PAGE antibody diluted at 1:1000