



[Go to Product page](#)

Datasheet for ABIN2854459  
**anti-ALAS2 antibody (Center)**

3 Images

1 Publication

### Overview

Quantity:	100 µL
Target:	ALAS2
Binding Specificity:	Center
Reactivity:	Human, Mouse
Host:	Rabbit
Clonality:	Polyclonal
Conjugate:	This ALAS2 antibody is un-conjugated
Application:	Western Blotting (WB)

### Product Details

Immunogen:	Recombinant protein encompassing a sequence within the center region of human ALAS-E. The exact sequence is proprietary.
Isotype:	IgG
Cross-Reactivity:	Rat (Rattus), Xenopus laevis, Zebrafish (Danio rerio), Cow (Bovine), Xenopus tropicalis
Cross-Reactivity (Details):	Rat (95 %), Xenopus laevis (81 %), Zebrafish (80 %), Bovine (95 %), Xenopus tropicalis (81 %)
Characteristics:	Rabbit Polyclonal antibody to ALAS-E (aminolevulinate, delta-, synthase 2) ALAS-E antibody [N3C3]
Purification:	Purified by antigen-affinity chromatography.

## Target Details

---

Target:	ALAS2
Alternative Name:	ALAS-E ( <a href="#">ALAS2 Products</a> )
Background:	<p>The product of this gene specifies an erythroid-specific mitochondrially located enzyme. The encoded protein catalyzes the first step in the heme biosynthetic pathway. Defects in this gene cause X-linked pyridoxine-responsive sideroblastic anemia. Alternatively spliced transcript variants encoding different isoforms have been identified.</p> <p>Cellular Localization: Mitochondrion matrix</p>
Molecular Weight:	65 kDa
Gene ID:	212
Pathways:	<a href="#">Transition Metal Ion Homeostasis</a>

## Application Details

---

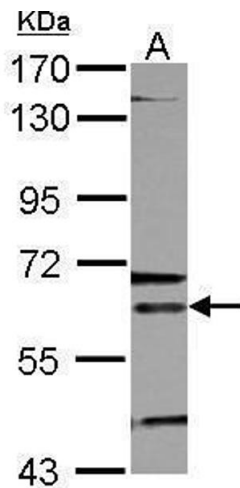
Application Notes:	<p>Suggested dilution Reference Western blot 1:500-1:3000* Not tested in other applications. *Optimal dilutions/concentrations should be determined by the researcher.Suggested dilutionReferenceWestern blot1:500-1:3000*</p>
Comment:	Positive Control: Raji , K562 , HL60 , mouse liver
Restrictions:	For Research Use only

## Handling

---

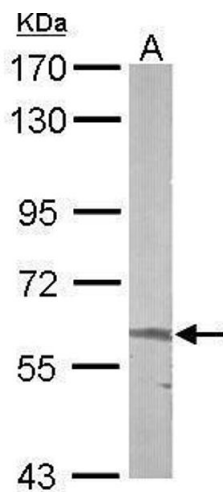
Format:	Liquid
Concentration:	1 mg/mL
Buffer:	0.1M Tris, 0.1M Glycine, 10 % Glycerol ( pH 7). 0.01 % Thimerosal was added as a preservative.
Preservative:	Thimerosal (Merthiolate)
Precaution of Use:	This product contains Thimerosal (Merthiolate): a POISONOUS AND HAZARDOUS SUBSTANCE which should be handled by trained staff only.
Storage:	-20 °C
Storage Comment:	Keep as concentrated solution. Aliquot and store at -20°C or below. Avoid multiple freeze-thaw cycles.

Product cited in: Fang, Lin, Liang, Liang: "A novel c-Kit/phospho-prohibitin axis enhances ovarian cancer stemness and chemoresistance via Notch3-PBX1 and  $\beta$ -catenin-ABCG2 signaling." in: **Journal of biomedical science**, Vol. 27, Issue 1, pp. 42, (2020) ([PubMed](#)).



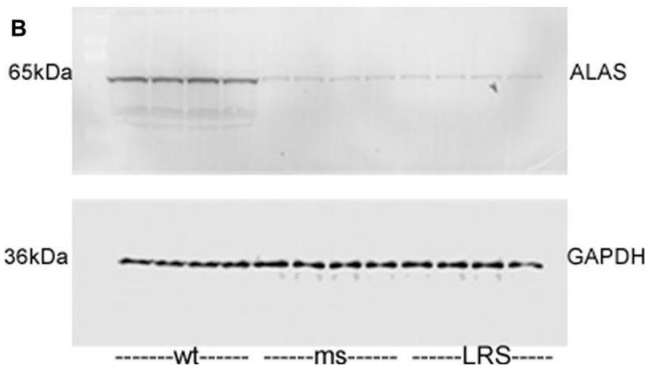
**Western Blotting**

**Image 1.** WB Image Sample (30 ug of whole cell lysate) A: K562 7.5% SDS PAGE antibody diluted at 1:500



**Western Blotting**

**Image 2.** WB Image Sample (50 ug of whole cell lysate) A: mouse liver 7.5% SDS PAGE antibody diluted at 1:1000



**Western Blotting**

**Image 3.** Mouse ferroportin, 5-aminolevulinic acid synthase (ALAS), and ferritin light chain (FLC) proteins are increased in sickle mice overexpressing human wt-FHC. Proteins of subcellular fractions isolated from livers of wt-, ms-, and LRS-treated mice (n = 4) were run on a western blot (30  $\mu$ g protein/lane) and immunostained for (A) microsomal ferroportin, (B) mitochondrial ALAS, and (C) cytosolic FLC. - figure provided by CiteAb. Source: PMID24860503