

Datasheet for ABIN2854461

anti-C4BPB antibody

3 Images

[Go to Product page](#)

Overview

Quantity:	100 µL
Target:	C4BPB
Reactivity:	Human
Host:	Rabbit
Clonality:	Polyclonal
Conjugate:	This C4BPB antibody is un-conjugated
Application:	Western Blotting (WB), Immunohistochemistry (Paraffin-embedded Sections) (IHC (p))

Product Details

Immunogen:	Recombinant protein encompassing a sequence within the center region of human C4 binding protein B. The exact sequence is proprietary.
Isotype:	IgG
Cross-Reactivity:	Human, Mouse
Characteristics:	Rabbit Polyclonal antibody to C4 binding protein B (complement component 4 binding protein, beta) C4 binding protein B antibody
Purification:	Purified by antigen-affinity chromatography.

Target Details

Target:	C4BPB
Alternative Name:	complement component 4 binding protein beta (C4BPB Products)

Target Details

Background: This gene encodes a member of a superfamily of proteins composed predominantly of tandemly arrayed short consensus repeats of approximately 60 amino acids. A single, unique beta-chain encoded by this gene assembles with seven identical alpha-chains into the predominant isoform of C4b-binding protein, a multimeric protein that controls activation of the complement cascade through the classical pathway. C4b-binding protein has a regulatory role in the coagulation system also, mediated through the beta-chain binding of protein S, a vitamin K-dependent protein that serves as a cofactor of activated protein C. The genes encoding both alpha and beta chains are located adjacent to each other on human chromosome 1 in the regulator of complement activation gene cluster. Alternative splicing gives rise to multiple transcript variants.

Cellular Localization: Secreted

Molecular Weight: 28 kDa

Gene ID: 725

UniProt: [P20851](#)

Pathways: [Complement System](#)

Application Details

Application Notes: WB: 1:500-1:3000. IHC-P: 1:100-1:1000. Optimal dilutions/concentrations should be determined by the researcher. Not tested in other applications.

Comment: Positive Control: Jurkat , Raji , K562 , BCL-1

Restrictions: For Research Use only

Handling

Format: Liquid

Concentration: 1 mg/mL

Buffer: 0.1M Tris-Glycine (pH 7), 20 % Glycerol, 0.01 % Thimerosal

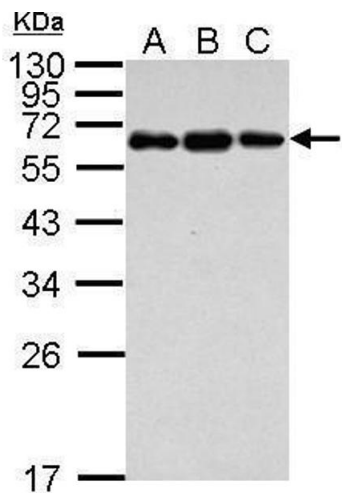
Preservative: Thimerosal (Merthiolate)

Precaution of Use: This product contains Thimerosal (Merthiolate): a POISONOUS AND HAZARDOUS SUBSTANCE which should be handled by trained staff only.

Storage: 4 °C, -20 °C

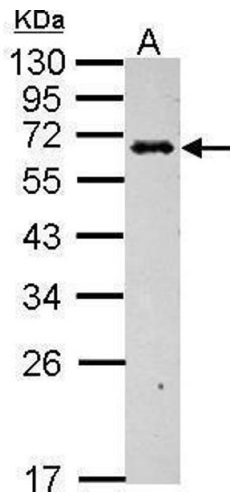
Storage Comment: Store as concentrated solution. Centrifuge briefly prior to opening vial. For short-term storage (1-2 weeks), store at 4°C. For long-term storage, aliquot and store at -20°C or below. Avoid multiple freeze-thaw cycles.

Validation report #104404 for Cleavage Under Targets and Release Using Nuclease (CUT&RUN)



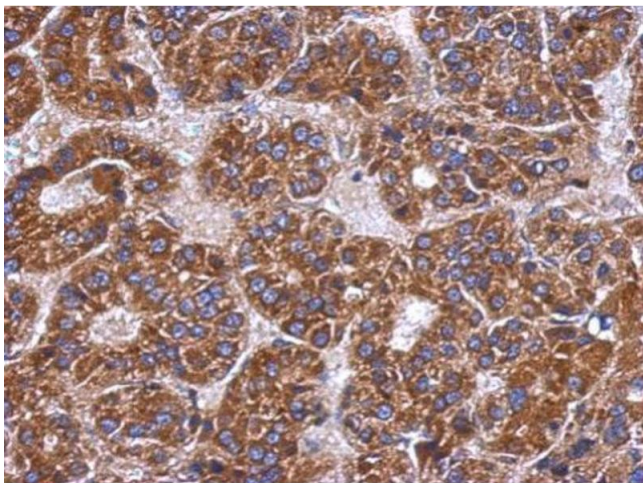
Western Blotting

Image 1. WB Image Sample (30 ug of whole cell lysate) A: Jurkat B: Raji C: K562 12% SDS PAGE antibody diluted at 1:1000



Western Blotting

Image 2. WB Image Sample (30 ug of whole cell lysate) A: BCL-1 12% SDS PAGE antibody diluted at 1:1000



Immunohistochemistry

Image 3. IHC-P Image Immunohistochemical analysis of paraffin-embedded human hepatoma, using C4 binding protein B, antibody at 1:500 dilution.