

Datasheet for ABIN2854464

anti-LYPLA1 antibody[Go to Product page](#)**1** Image

Overview

Quantity:	100 µL
Target:	LYPLA1
Reactivity:	Human
Host:	Rabbit
Clonality:	Polyclonal
Conjugate:	This LYPLA1 antibody is un-conjugated
Application:	Western Blotting (WB)

Product Details

Immunogen:	Recombinant protein encompassing a sequence within the center region of human LYPLA1. The exact sequence is proprietary.
Isotype:	IgG
Cross-Reactivity:	Human
Characteristics:	Rabbit polyclonal antibody to LYPLA1 (lysophospholipase I) LYPLA1 antibody [N1C3]
Purification:	Purified by antigen-affinity chromatography.

Target Details

Target:	LYPLA1
Alternative Name:	lysophospholipase 1 (LYPLA1 Products)

Target Details

Background: Lysophospholipases are enzymes that act on biological membranes to regulate the multifunctional lysophospholipids. The protein encoded by this gene hydrolyzes lysophosphatidylcholine in both monomeric and micellar forms. The use of alternate polyadenylation sites has been found for this gene. There are alternatively spliced transcript variants described for this gene but the full length nature is not known yet.

Cellular Localization: Cytoplasm

Molecular Weight: 25 kDa

Gene ID: 10434

UniProt: [O75608](#)

Application Details

Application Notes: WB: 1:500-1:3000. Optimal dilutions/concentrations should be determined by the researcher.
Not tested in other applications.

Comment: Positive Control: LYPLA1 transfected 293T

Restrictions: For Research Use only

Handling

Format: Liquid

Concentration: 1 mg/mL

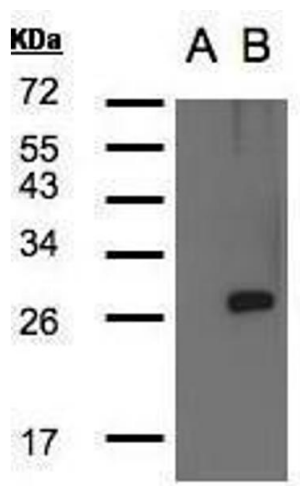
Buffer: 0.1M Tris-Glycine (pH 7), 10 % Glycerol, 0.01 % Thimerosal

Preservative: Thimerosal (Merthiolate)

Precaution of Use: This product contains Thimerosal (Merthiolate): a POISONOUS AND HAZARDOUS SUBSTANCE which should be handled by trained staff only.

Storage: 4 °C, -20 °C

Storage Comment: Store as concentrated solution. Centrifuge briefly prior to opening vial. For short-term storage (1-2 weeks), store at 4°C. For long-term storage, aliquot and store at -20°C or below. Avoid multiple freeze-thaw cycles.



Western Blotting

Image 1. WB Image Western Blot analysis of LYPLA1 expression in transfected 293T cell line by LYPLA1 polyclonal antibody. A: Non-transfected lysate. B: LYPLA1 transfected lysate. 12% SDS PAGE antibody diluted at 1:500