

Datasheet for ABIN2854467

anti-CYB5R2 antibody[Go to Product page](#)**1** Image

Overview

Quantity:	100 µL
Target:	CYB5R2
Reactivity:	Human
Host:	Rabbit
Clonality:	Polyclonal
Conjugate:	This CYB5R2 antibody is un-conjugated
Application:	Western Blotting (WB)

Product Details

Immunogen:	Recombinant protein encompassing a sequence within the center region of human CYB5R2. The exact sequence is proprietary.
Isotype:	IgG
Cross-Reactivity:	Human
Characteristics:	Rabbit Polyclonal antibody to CYB5R2 (cytochrome b5 reductase 2) CYB5R2 antibody [N1C2]
Purification:	Purified by antigen-affinity chromatography.

Target Details

Target:	CYB5R2
Alternative Name:	cytochrome b5 reductase 2 (CYB5R2 Products)

Target Details

Background: NADH-cytochrome b5 reductases are involved in desaturation and elongation of fatty acids, cholesterol biosynthesis, drug metabolism, and, in erythrocyte, methemoglobin reduction (By similarity). Responsible for NADH-dependent lucigenin chemiluminescence in spermatozoa by reducing both lucigenin and 2-[4-iodophenyl]-3-[4-nitrophenyl]-5-[2,4-disulfophenyl]-2H tetrazolium monosodium salt (WST-1).

Molecular Weight: 31 kDa

Gene ID: 51700

UniProt: [Q6BCY4](#)

Application Details

Application Notes: WB: 1:500-1:3000. Optimal dilutions/concentrations should be determined by the researcher. Not tested in other applications.

Comment: Positive Control: PC-3 , U87-MG , SK-N-SH

Restrictions: For Research Use only

Handling

Format: Liquid

Concentration: 1 mg/mL

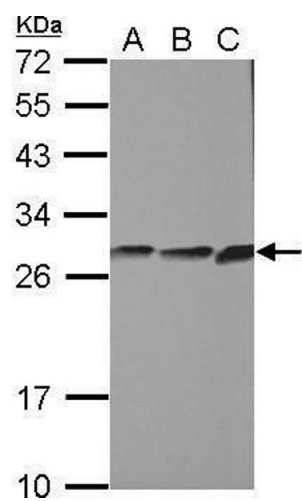
Buffer: 1XPBS (pH 7), 1 % BSA, 20 % Glycerol, 0.01 % Thimerosal

Preservative: Thimerosal (Merthiolate)

Precaution of Use: This product contains Thimerosal (Merthiolate): a POISONOUS AND HAZARDOUS SUBSTANCE which should be handled by trained staff only.

Storage: 4 °C,-20 °C

Storage Comment: Store as concentrated solution. Centrifuge briefly prior to opening vial. For short-term storage (1-2 weeks), store at 4°C. For long-term storage, aliquot and store at -20°C or below. Avoid multiple freeze-thaw cycles.



Western Blotting

Image 1. WB Image Sample (30 ug of whole cell lysate) A: PC-3 B: U87-MG C: SK-N-SH 12% SDS PAGE antibody diluted at 1:1000