

Datasheet for ABIN2854468  
**anti-ARSG antibody**



[Go to Product page](#)

1 Image

## Overview

Quantity:	100 µL
Target:	ARSG
Reactivity:	Human
Host:	Rabbit
Clonality:	Polyclonal
Conjugate:	This ARSG antibody is un-conjugated
Application:	Western Blotting (WB)

## Product Details

Immunogen:	Recombinant protein encompassing a sequence within the center region of human Arylsulfatase G. The exact sequence is proprietary.
Isotype:	IgG
Cross-Reactivity:	Human
Characteristics:	Rabbit polyclonal antibody to Arylsulfatase G (arylsulfatase G) Arylsulfatase G antibody [N2C2], Internal
Purification:	Purified by antigen-affinity chromatography.

## Target Details

Target:	ARSG
Alternative Name:	arylsulfatase G ( <a href="#">ARSG Products</a> )

## Target Details

**Background:** Sulfatases, such as ARSG, hydrolyze sulfate esters from sulfated steroids, carbohydrates, proteoglycans, and glycolipids. They are involved in hormone biosynthesis, modulation of cell signaling, and degradation of macromolecules. This gene, a novel arylsulfatase, has activity toward pseudosubstrates including p-nitrocatechol sulfate and 4-methylumbelliferyl sulfate. Activity is competitively inhibited by phosphate. The unprocessed protein is active as a 63- kDa monomer and demonstrates an acidic pH optimum as typically seen for lysosomal sulfatases. The protein accumulates within lysosomes and is also a glycoprotein that binds specifically to mannose 6-phosphate receptors.

Cellular Localization: Endoplasmic reticulum

**Molecular Weight:** 57 kDa

**Gene ID:** 22901

**UniProt:** [Q96EG1](#)

## Application Details

**Application Notes:** WB: 1:500-1:3000. Optimal dilutions/concentrations should be determined by the researcher. Not tested in other applications.

**Comment:** Positive Control: H1299

**Restrictions:** For Research Use only

## Handling

**Format:** Liquid

**Concentration:** 0.66 mg/mL

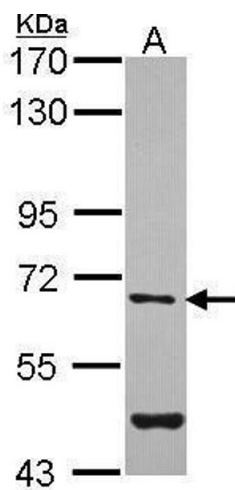
**Buffer:** 0.1M Tris-Glycine ( pH 7), 10 % Glycerol, 0.01 % Thimerosal

**Preservative:** Thimerosal (Merthiolate)

**Precaution of Use:** This product contains Thimerosal (Merthiolate): a POISONOUS AND HAZARDOUS SUBSTANCE which should be handled by trained staff only.

**Storage:** 4 °C, -20 °C

**Storage Comment:** Store as concentrated solution. Centrifuge briefly prior to opening vial. For short-term storage (1-2 weeks), store at 4°C. For long-term storage, aliquot and store at -20°C or below. Avoid multiple freeze-thaw cycles.



Western Blotting

**Image 1.** WB Image Sample (30 ug of whole cell lysate) A:  
H1299 7.5% SDS PAGE antibody diluted at 1:1000