

Datasheet for ABIN2854469

**anti-CD99L2 antibody**[Go to Product page](#)**1** Image

## Overview

Quantity:	100 µL
Target:	CD99L2
Reactivity:	Human
Host:	Rabbit
Clonality:	Polyclonal
Conjugate:	This CD99L2 antibody is un-conjugated
Application:	Immunofluorescence (IF), Immunocytochemistry (ICC)

## Product Details

Immunogen:	Recombinant protein encompassing a sequence within the center region of human CD99L2. The exact sequence is proprietary.
Isotype:	IgG
Cross-Reactivity:	Human
Characteristics:	Rabbit Polyclonal antibody to CD99L2 (CD99 Molecule-like 2) CD99L2 antibody
Purification:	Purified by antigen-affinity chromatography.

## Target Details

Target:	CD99L2
Alternative Name:	CD99 molecule like 2 ( <a href="#">CD99L2 Products</a> )

## Target Details

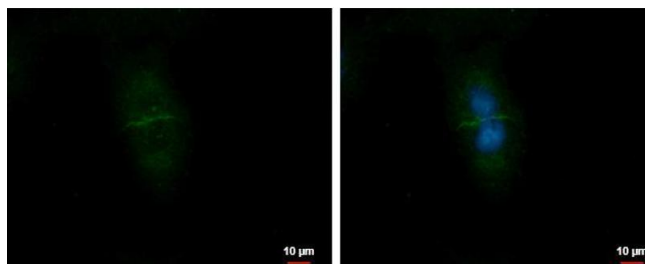
Background:	<p>This gene encodes a cell-surface protein that is similar to CD99. A similar protein in mouse functions as an adhesion molecule during leukocyte extravasation. Alternate splicing results in multiple transcript variants.</p> <p>Cellular Localization: Cell membrane, Single-pass type I membrane protein, Extracellular side , Cell junction , Cell membrane , Cell junction</p>
Molecular Weight:	28 kDa
Gene ID:	83692
UniProt:	<a href="#">Q8TCZ2</a>

## Application Details

Application Notes:	<p>ICC/IF: 1:100-1:1000. Optimal dilutions/concentrations should be determined by the researcher.</p> <p>Not tested in other applications.</p>
Restrictions:	For Research Use only

## Handling

Format:	Liquid
Concentration:	1 mg/mL
Buffer:	1XPBS ( pH 7), 20 % Glycerol, 0.01 % Thimerosal
Preservative:	Thimerosal (Merthiolate)
Precaution of Use:	This product contains Thimerosal (Merthiolate): a POISONOUS AND HAZARDOUS SUBSTANCE which should be handled by trained staff only.
Storage:	4 °C,-20 °C
Storage Comment:	Store as concentrated solution. Centrifuge briefly prior to opening vial. For short-term storage (1-2 weeks), store at 4°C. For long-term storage, aliquot and store at -20°C or below. Avoid multiple freeze-thaw cycles.



### Immunofluorescence

**Image 1.** ICC/IF Image CD99L2 antibody detects CD99L2 protein at Cell membrane by immunofluorescent analysis. Sample: A549 cells were fixed in ice-cold MeOH for 5 min. Green: CD99L2 protein stained by CD99L2 antibody , diluted at 1:500. Blue: Hoechst 33342 staining.