

Datasheet for ABIN2854480  
**anti-NOTCH3 antibody (C-Term)**



[Go to Product page](#)

1 Image

## Overview

Quantity:	100 µL
Target:	NOTCH3
Binding Specificity:	C-Term
Reactivity:	Human
Host:	Rabbit
Clonality:	Polyclonal
Conjugate:	This NOTCH3 antibody is un-conjugated
Application:	Western Blotting (WB)

## Product Details

Immunogen:	Carrier-protein conjugated synthetic peptide encompassing a sequence within the C-terminus region of human Notch 3. The exact sequence is proprietary.
Isotype:	IgG
Cross-Reactivity:	Mouse (Murine), Rat (Rattus)
Cross-Reactivity (Details):	Mouse (100 %), Rat (100 %)
Characteristics:	Rabbit polyclonal antibody to Notch 3 (Notch homolog 3 (Drosophila)) Notch 3 antibody [C3], C-term
Purification:	Affinity purified by Protein A.

## Target Details

Target:	NOTCH3
Alternative Name:	Notch 3 ( <a href="#">NOTCH3 Products</a> )
Background:	<p>This gene encodes the third discovered human homologue of the Drosophila melanogaster type I membrane protein notch. In Drosophila, notch interaction with its cell-bound ligands (delta, serrate) establishes an intercellular signalling pathway that plays a key role in neural development. Homologues of the notch-ligands have also been identified in human, but precise interactions between these ligands and the human notch homologues remains to be determined. Mutations in NOTCH3 have been identified as the underlying cause of cerebral autosomal dominant arteriopathy with subcortical infarcts and leukoencephalopathy (CADASIL).</p> <p>Cellular Localization: Cell membrane, Single-pass type I membrane protein , Notch 3 intracellular domain: Nucleus</p>
Molecular Weight:	244 kDa
Gene ID:	4854
Pathways:	<a href="#">Notch Signaling</a>

## Application Details

Application Notes:	<p>Suggested dilution Reference Western blot 1:500-1:3000* Not tested in other applications.</p> <p>*Optimal dilutions/concentrations should be determined by the researcher.Suggested dilutionReferenceWestern blot1:500-1:3000*</p>
Comment:	Positive Control: HeLa
Restrictions:	For Research Use only

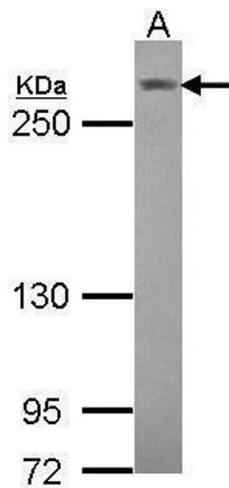
## Handling

Format:	Liquid
Concentration:	5.26 mg/mL
Buffer:	0.1M Tris, 0.1M Glycine, 10 % Glycerol ( pH 7). 0.01 % Thimerosal was added as a preservative.
Preservative:	Thimerosal (Merthiolate)
Precaution of Use:	This product contains Thimerosal (Merthiolate): a POISONOUS AND HAZARDOUS SUBSTANCE which should be handled by trained staff only.

Handling

Storage:	-20 °C
Storage Comment:	Keep as concentrated solution. Aliquot and store at -20°C or below. Avoid multiple freeze-thaw cycles.

Images



Western Blotting

**Image 1.** WB Image Sample (30 ug of whole cell lysate) A:  
Hela 5% SDS PAGE antibody diluted at 1:1000