

Datasheet for ABIN2854485
anti-RHOU antibody (N-Term)[Go to Product page](#)

1 Image

Overview

| | |
|----------------------|---|
| Quantity: | 100 µL |
| Target: | RHOU |
| Binding Specificity: | N-Term |
| Reactivity: | Human |
| Host: | Rabbit |
| Clonality: | Polyclonal |
| Conjugate: | This RHOU antibody is un-conjugated |
| Application: | Immunohistochemistry (Paraffin-embedded Sections) (IHC (p)) |

Product Details

| | |
|-------------------|--|
| Immunogen: | Carrier-protein conjugated synthetic peptide encompassing a sequence within the N-terminus region of human WRCH1. The exact sequence is proprietary. |
| Isotype: | IgG |
| Cross-Reactivity: | Human |
| Characteristics: | Rabbit polyclonal antibody to RHOU (ras homolog gene family, member U) RHOU antibody |
| Purification: | Purified by antigen-affinity chromatography. |

Target Details

| | |
|---------|------|
| Target: | RHOU |
|---------|------|

Target Details

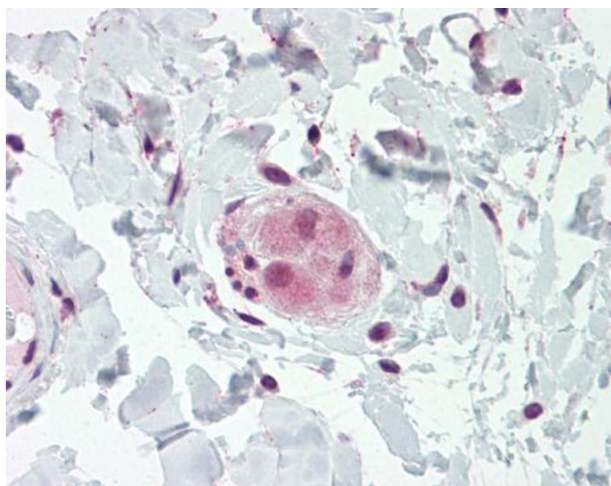
| | |
|-------------------|--|
| Alternative Name: | ras homolog family member U (RHOU Products) |
| Background: | <p>This gene encodes a member of the Rho family of GTPases. This protein can activate PAK1 and JNK1, and can induce filopodium formation and stress fiber dissolution. It may also mediate the effects of WNT1 signaling in the regulation of cell morphology, cytoskeletal organization, and cell proliferation.</p> <p>Cellular Localization: Cell membrane, Lipid-anchor, Cytoplasmic side , Golgi apparatus membrane, Lipid-anchor , Cell junction , focal adhesion , Cell projection , podosome</p> |
| Molecular Weight: | 28 kDa |
| Gene ID: | 58480 |
| UniProt: | Q7L0Q8 |

Application Details

| | |
|--------------------|--|
| Application Notes: | IHC-P: 1:100-1:1000. Optimal dilutions/concentrations should be determined by the researcher. Not tested in other applications. |
| Restrictions: | For Research Use only |

Handling

| | |
|--------------------|--|
| Format: | Liquid |
| Concentration: | 1 mg/mL |
| Buffer: | 1XPBS (pH 7), 10 % Glycerol, 0.01 % Thimerosal |
| Preservative: | Thimerosal (Merthiolate) |
| Precaution of Use: | This product contains Thimerosal (Merthiolate): a POISONOUS AND HAZARDOUS SUBSTANCE which should be handled by trained staff only. |
| Storage: | 4 °C, -20 °C |
| Storage Comment: | Store as concentrated solution. Centrifuge briefly prior to opening vial. For short-term storage (1-2 weeks), store at 4°C. For long-term storage, aliquot and store at -20°C or below. Avoid multiple freeze-thaw cycles. |



Immunohistochemistry

Image 1. IHC-P Image RHOU antibody detects RHOU protein at cytoplasm on human placenta by immunohistochemical analysis. Sample: Paraffin-embedded placenta. RHOU antibody , dilution: 1:100.