

Datasheet for ABIN2854492

anti-CD1d antibody[Go to Product page](#)**1** Image

Overview

Quantity:	100 µL
Target:	CD1d (CD1D)
Reactivity:	Human
Host:	Rabbit
Clonality:	Polyclonal
Conjugate:	This CD1d antibody is un-conjugated
Application:	Western Blotting (WB)

Product Details

Immunogen:	Recombinant protein encompassing a sequence within the center region of human CD1D. The exact sequence is proprietary.
Isotype:	IgG
Cross-Reactivity:	Human
Characteristics:	Rabbit polyclonal antibody to CD1D (CD1D molecule) CD1D antibody [N2C3]
Purification:	Purified by antigen-affinity chromatography.

Target Details

Target:	CD1d (CD1D)
Alternative Name:	CD1d molecule (CD1D Products)

Target Details

Background:	<p>This gene encodes a divergent member of the CD1 family of transmembrane glycoproteins, which are structurally related to the major histocompatibility complex (MHC) proteins and form heterodimers with beta-2-microglobulin. The CD1 proteins mediate the presentation of primarily lipid and glycolipid antigens of self or microbial origin to T cells. The human genome contains five CD1 family genes organized in a cluster on chromosome 1. The CD1 family members are thought to differ in their cellular localization and specificity for particular lipid ligands. The protein encoded by this gene localizes to late endosomes and lysosomes via a tyrosine-based motif in the cytoplasmic tail.</p> <p>Cellular Localization: Cell membrane , Endosome membrane , Lysosome membrane</p>
Molecular Weight:	38 kDa
Gene ID:	912
UniProt:	P15813
Pathways:	Regulation of Leukocyte Mediated Immunity , Positive Regulation of Immune Effector Process

Application Details

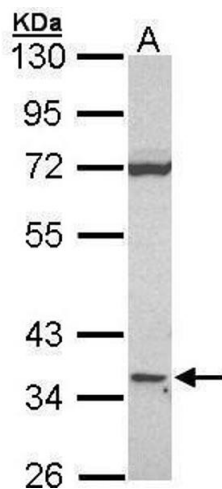
Application Notes:	<p>WB: 1:500-1:3000. Optimal dilutions/concentrations should be determined by the researcher.</p> <p>Not tested in other applications.</p>
Comment:	Positive Control: Raji
Restrictions:	For Research Use only

Handling

Format:	Liquid
Concentration:	0.91 mg/mL
Buffer:	0.1M Tris-Glycine (pH 7), 10 % Glycerol, 0.01 % Thimerosal
Preservative:	Thimerosal (Merthiolate)
Precaution of Use:	This product contains Thimerosal (Merthiolate): a POISONOUS AND HAZARDOUS SUBSTANCE which should be handled by trained staff only.
Storage:	4 °C,-20 °C
Storage Comment:	Store as concentrated solution. Centrifuge briefly prior to opening vial. For short-term storage (1-2 weeks), store at 4°C. For long-term storage, aliquot and store at -20°C or below. Avoid

multiple freeze-thaw cycles.

Validation report #104342 for Multiplex Immunohistochemistry (mIHC)



Western Blotting

Image 1. WB Image Sample (30 ug of whole cell lysate) A: Raji 10% SDS PAGE CD1D antibody antibody diluted at 1:1000