

Datasheet for ABIN2854498

anti-CPOX antibody[Go to Product page](#)**1** Image

Overview

Quantity:	100 µL
Target:	CPOX
Reactivity:	Human
Host:	Rabbit
Clonality:	Polyclonal
Conjugate:	This CPOX antibody is un-conjugated
Application:	Western Blotting (WB)

Product Details

Immunogen:	Recombinant protein encompassing a sequence within the center region of human CPOX. The exact sequence is proprietary.
Isotype:	IgG
Cross-Reactivity:	Human
Characteristics:	Rabbit polyclonal antibody to CPOX (coproporphyrinogen oxidase) CPOX antibody [N2C3]
Purification:	Purified by antigen-affinity chromatography.

Target Details

Target:	CPOX
Alternative Name:	coproporphyrinogen oxidase (CPOX Products)

Target Details

Background: Coproporphyrinogen oxidase (EC 1.3.3.3) is the sixth enzyme of the heme biosynthetic pathway. This soluble protein is localized in the intermembrane space of mitochondria and catalyzes the conversion of 2 propionate groups at positions 2 and 4 of coproporphyrinogen III to 2 vinyl groups of protoporphyrinogen IX.[supplied by OMIM]

Cellular Localization: Mitochondrion intermembrane space

Molecular Weight: 50 kDa

Gene ID: 1371

UniProt: [P36551](#)

Application Details

Application Notes: WB: 1:500-1:3000. Optimal dilutions/concentrations should be determined by the researcher.
Not tested in other applications.

Comment: Positive Control: HCT116

Restrictions: For Research Use only

Handling

Format: Liquid

Concentration: 0.42 mg/mL

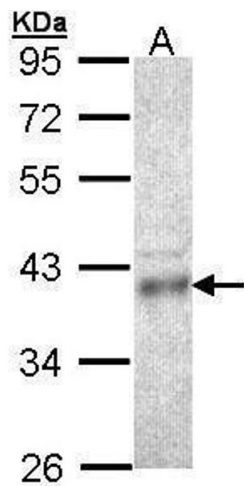
Buffer: 0.1M Tris-Glycine (pH 7), 10 % Glycerol, 0.01 % Thimerosal

Preservative: Thimerosal (Merthiolate)

Precaution of Use: This product contains Thimerosal (Merthiolate): a POISONOUS AND HAZARDOUS SUBSTANCE which should be handled by trained staff only.

Storage: 4 °C,-20 °C

Storage Comment: Store as concentrated solution. Centrifuge briefly prior to opening vial. For short-term storage (1-2 weeks), store at 4°C. For long-term storage, aliquot and store at -20°C or below. Avoid multiple freeze-thaw cycles.



Western Blotting

Image 1. WB Image Sample (30 ug of whole cell lysate) A:
HCT116 10% SDS PAGE antibody diluted at 1:1000