



[Go to Product page](#)

Datasheet for ABIN2854499  
**anti-SLC20A2 antibody**

1 Image

### Overview

Quantity:	100 µL
Target:	SLC20A2
Reactivity:	Human
Host:	Rabbit
Clonality:	Polyclonal
Conjugate:	This SLC20A2 antibody is un-conjugated
Application:	Western Blotting (WB)

### Product Details

Immunogen:	Recombinant protein encompassing a sequence within the center region of human PiT2. The exact sequence is proprietary.
Isotype:	IgG
Cross-Reactivity:	Human
Characteristics:	Rabbit polyclonal antibody to SLC20A2 (solute carrier family 20 (phosphate transporter), member 2) PiT2 antibody [N2C1], Internal
Purification:	Purified by antigen-affinity chromatography.

### Target Details

Target:	SLC20A2
Alternative Name:	solute carrier family 20 member 2 ( <a href="#">SLC20A2 Products</a> )

## Target Details

---

**Background:** Sodium-phosphate symporter which seems to play a fundamental housekeeping role in phosphate transport by absorbing phosphate from interstitial fluid for normal cellular functions such as cellular metabolism, signal transduction, and nucleic acid and lipid synthesis. In vitro, sodium-dependent phosphate uptake is not significantly affected by acidic and alkaline conditions, however sodium-independent phosphate uptake occurs at acidic conditions. May play a role in extracellular matrix, cartilage and vascular calcification. Functions as a retroviral receptor and confers human cells susceptibility to infection to amphotropic murine leukemia virus (A-MuLV), 10A1 murine leukemia virus (10A1 MLV) and some feline leukemia virus subgroup B (FeLV-B) variants.

Cellular Localization: Cell membrane, Multi-pass membrane protein

**Molecular Weight:** 70 kDa

**Gene ID:** 6575

**UniProt:** [Q08357](#)

## Application Details

---

**Application Notes:** WB: 1:500-1:3000. Optimal dilutions/concentrations should be determined by the researcher. Not tested in other applications.

**Comment:** Positive Control: A431 , Unboiled U87-MG

**Restrictions:** For Research Use only

## Handling

---

**Format:** Liquid

**Concentration:** 0.46 mg/mL

**Buffer:** 0.1M Tris-Glycine ( pH 7), 10 % Glycerol, 0.01 % Thimerosal

**Preservative:** Thimerosal (Merthiolate)

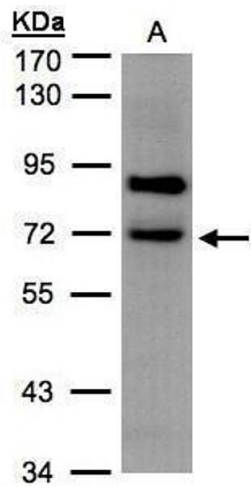
**Precaution of Use:** This product contains Thimerosal (Merthiolate): a POISONOUS AND HAZARDOUS SUBSTANCE which should be handled by trained staff only.

**Storage:** 4 °C,-20 °C

**Storage Comment:** Store as concentrated solution. Centrifuge briefly prior to opening vial. For short-term storage (1-2 weeks), store at 4°C. For long-term storage, aliquot and store at -20°C or below. Avoid

multiple freeze-thaw cycles.

Validation report #104426 for Immunohistochemistry (IHC)



#### Western Blotting

**Image 1.** WB Image Sample(30 µg of whole cell lysate)

A:293T 7.5% SDS PAGE antibody diluted at 1:500