



## Datasheet for ABIN2854502 anti-CRYM antibody



[Go to Product page](#)

### 1 Image

#### Overview

|              |                                     |
|--------------|-------------------------------------|
| Quantity:    | 100 µL                              |
| Target:      | CRYM                                |
| Reactivity:  | Human                               |
| Host:        | Rabbit                              |
| Clonality:   | Polyclonal                          |
| Conjugate:   | This CRYM antibody is un-conjugated |
| Application: | Western Blotting (WB)               |

#### Product Details

|                   |  |
|-------------------|--|
| Immunogen:        | Recombinant protein encompassing a sequence within the center region of human CRYM. The exact sequence is proprietary. |
| Isotype:          | IgG  |
| Cross-Reactivity: | Mouse  |
| Characteristics:  | Rabbit Polyclonal antibody to mu Crystallin (crystallin, mu)<br>CRYM antibody [N1C3]                                   |
| Purification:     | Purified by antigen-affinity chromatography.   |

#### Target Details

|                   |   |
|-------------------|---|
| Target:           | CRYM  |
| Alternative Name: | crystallin mu ( <a href="#">CRYM Products</a> ) |

## Target Details

---

**Background:** Crystallins are separated into two classes: taxon-specific and ubiquitous. The former class is also called phylogenetically-restricted crystallins. The latter class constitutes the major proteins of vertebrate eye lens and maintains the transparency and refractive index of the lens. This gene encodes a taxon-specific crystallin protein that binds NADPH and has sequence similarity to bacterial ornithine cyclodeaminases. The encoded protein does not perform a structural role in lens tissue, and instead it binds thyroid hormone for possible regulatory or developmental roles. Multiple alternatively spliced transcript variants have been found for this gene.

Cellular Localization: Cytoplasm

---

**Molecular Weight:** 34 kDa

---

**Gene ID:** 1428

---

**UniProt:** [Q14894](#)

---

**Pathways:** [Hormone Transport, Sensory Perception of Sound](#)

## Application Details

---

**Application Notes:** WB: 1:500-1:3000. Optimal dilutions/concentrations should be determined by the researcher. Not tested in other applications.

---

**Comment:** Positive Control: Mouse brain

---

**Restrictions:** For Research Use only

## Handling

---

**Format:** Liquid

---

**Concentration:** 0.7 mg/mL

---

**Buffer:** 0.1M Tris-Glycine ( pH 7), 10 % Glycerol, 0.01 % Thimerosal

---

**Preservative:** Thimerosal (Merthiolate)

---

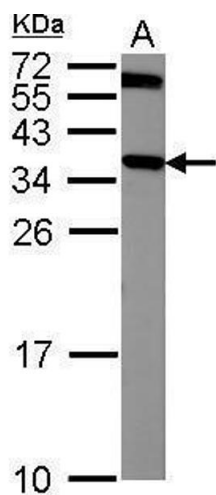
**Precaution of Use:** This product contains Thimerosal (Merthiolate): a POISONOUS AND HAZARDOUS SUBSTANCE which should be handled by trained staff only.

---

**Storage:** 4 °C, -20 °C

---

**Storage Comment:** Store as concentrated solution. Centrifuge briefly prior to opening vial. For short-term storage (1-2 weeks), store at 4°C. For long-term storage, aliquot and store at -20°C or below. Avoid multiple freeze-thaw cycles.



### Western Blotting

**Image 1.** WB Image Sample (50 ug of whole cell lysate) A:  
Mouse brain 12% SDS PAGE antibody diluted at 1:1000