



[Go to Product page](#)

Datasheet for ABIN2854504
anti-PLCL1 antibody (N-Term)

1 Image

Overview

Quantity:	100 µL
Target:	PLCL1
Binding Specificity:	N-Term
Reactivity:	Human
Host:	Rabbit
Clonality:	Polyclonal
Conjugate:	This PLCL1 antibody is un-conjugated
Application:	Immunohistochemistry (Paraffin-embedded Sections) (IHC (p))

Product Details

Immunogen:	Recombinant protein encompassing a sequence within the N-terminus region of human PLCL1. The exact sequence is proprietary.
Isotype:	IgG
Cross-Reactivity:	Rhesus Monkey
Cross-Reactivity (Details):	Rhesus Monkey (100 %)
Characteristics:	Rabbit polyclonal antibody to PLCL1 (phospholipase C-like 1) PLCL1 antibody
Purification:	Purified by antigen-affinity chromatography.

Target Details

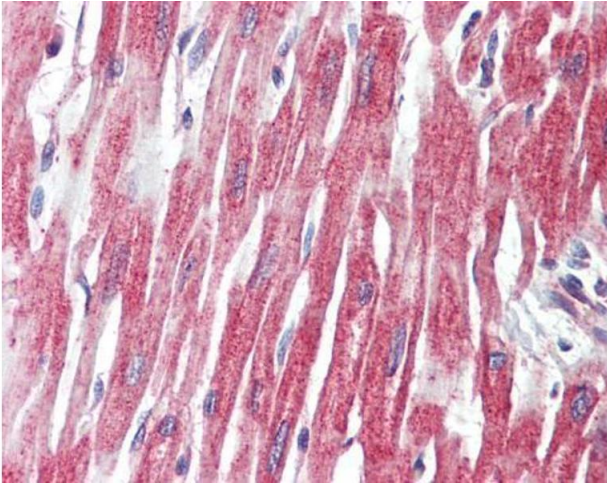
Target:	PLCL1
Alternative Name:	PLCL1 (PLCL1 Products)
Background:	<p>Involved in an inositol phospholipid-based intracellular signaling cascade. Shows no PLC activity to phosphatidylinositol 4,5-bisphosphate and phosphatidylinositol. Component in the phospho-dependent endocytosis process of GABA A receptor (By similarity). Regulates the turnover of receptors and thus contributes to the maintenance of GABA-mediated synaptic inhibition. Its aberrant expression could contribute to the genesis and progression of lung carcinoma. Acts as a inhibitor of PPP1C.</p> <p>Cellular Localization: Cytoplasm</p>
Molecular Weight:	123 kDa
Gene ID:	5334

Application Details

Application Notes:	<p>Suggested dilution Reference IHC (Formalin-fixed paraffin-embedded sections) 1:100-1:1000* Not tested in other applications. *Optimal dilutions/concentrations should be determined by the researcher.Suggested dilutionReferenceIHC (Formalin-fixed paraffin-embedded sections)1:100-1:1000*</p>
Comment:	Positive Control: Target recombinant protein
Restrictions:	For Research Use only

Handling

Format:	Liquid
Concentration:	0.92 mg/mL
Buffer:	0.1M Tris, 0.1M Glycine, 10 % Glycerol (pH 7). 0.01 % Thimerosal was added as a preservative.
Preservative:	Thimerosal (Merthiolate)
Precaution of Use:	This product contains Thimerosal (Merthiolate): a POISONOUS AND HAZARDOUS SUBSTANCE which should be handled by trained staff only.
Storage:	-20 °C
Storage Comment:	Keep as concentrated solution. Aliquot and store at -20°C or below. Avoid multiple freeze-thaw cycles.



Immunohistochemistry

Image 1. IHC-P Image PLCL1 antibody detects PLCL1 protein at cytoplasm on human placenta by immunohistochemical analysis. Sample: Paraffin-embedded placenta. PLCL1 antibody , dilution: 1:100.