

Datasheet for ABIN2854505  
**anti-DPP8 antibody**[Go to Product page](#)

## 2 Images

## Overview

Quantity:	100 µL
Target:	DPP8
Reactivity:	Human
Host:	Rabbit
Clonality:	Polyclonal
Conjugate:	This DPP8 antibody is un-conjugated
Application:	Western Blotting (WB)

## Product Details

Immunogen:	Recombinant protein encompassing a sequence within the center region of human DPRP1. The exact sequence is proprietary.
Isotype:	IgG
Cross-Reactivity:	Human, Mouse
Characteristics:	Rabbit Polyclonal antibody to DPRP1 (dipeptidyl-peptidase 8) DPRP1 antibody [N3C2], Internal
Purification:	Purified by antigen-affinity chromatography.

## Target Details

Target:	DPP8
Alternative Name:	dipeptidyl peptidase 8 ( <a href="#">DPP8 Products</a> )

## Target Details

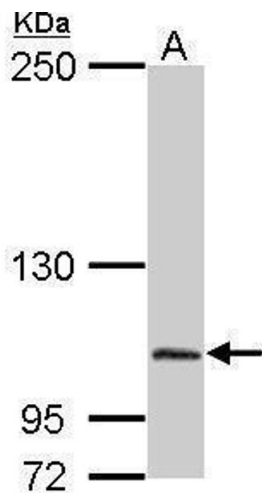
Background:	<p>This gene encodes a member of the peptidase S9B family, a small family of dipeptidyl peptidases that are able to cleave peptide substrates at a prolyl bond. The encoded protein shares similarity with dipeptidyl peptidase IV in that it is ubiquitously expressed, and hydrolyzes the same substrates. These similarities suggest that, like dipeptidyl peptidase IV, this protein may play a role in T-cell activation and immune function. Alternatively spliced transcript variants encoding different isoforms have been described.</p> <p>Cellular Localization: Cytoplasm</p>
Molecular Weight:	103 kDa
Gene ID:	54878
UniProt:	<a href="#">Q6V1X1</a>

## Application Details

Application Notes:	<p>WB: 1:500-1:3000. Optimal dilutions/concentrations should be determined by the researcher.</p> <p>Not tested in other applications.</p>
Comment:	Positive Control: A549 , Mouse brain
Restrictions:	For Research Use only

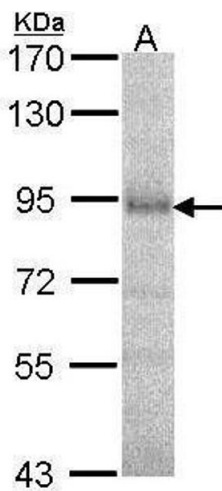
## Handling

Format:	Liquid
Concentration:	1 mg/mL
Buffer:	0.1M Tris-Glycine ( pH 7), 10 % Glycerol, 0.01 % Thimerosal
Preservative:	Thimerosal (Merthiolate)
Precaution of Use:	This product contains Thimerosal (Merthiolate): a POISONOUS AND HAZARDOUS SUBSTANCE which should be handled by trained staff only.
Storage:	4 °C,-20 °C
Storage Comment:	Store as concentrated solution. Centrifuge briefly prior to opening vial. For short-term storage (1-2 weeks), store at 4°C. For long-term storage, aliquot and store at -20°C or below. Avoid multiple freeze-thaw cycles.



Western Blotting

**Image 1.** WB Image Sample (50 ug of whole cell lysate) A:  
Mouse brain 5% SDS PAGE antibody diluted at 1:2000



Western Blotting

**Image 2.** WB Image Sample (30 ug of whole cell lysate) A:  
A549 7.5% SDS PAGE antibody diluted at 1:1000