



Datasheet for ABIN2854514  
**anti-SIRPG antibody**



[Go to Product page](#)

1 Image

Overview

Quantity:	100 µL
Target:	SIRPG
Reactivity:	Human
Host:	Rabbit
Clonality:	Polyclonal
Conjugate:	This SIRPG antibody is un-conjugated
Application:	Western Blotting (WB)

Product Details

Immunogen:	Recombinant protein encompassing a sequence within the center region of human SIRP gamma. The exact sequence is proprietary.
Isotype:	IgG
Cross-Reactivity:	Human
Characteristics:	Rabbit polyclonal antibody to CD172 gamma (signal-regulatory protein gamma) CD172 gamma antibody
Purification:	Purified by antigen-affinity chromatography.

Target Details

Target:	SIRPG
Alternative Name:	signal regulatory protein gamma ( <a href="#">SIRPG Products</a> )

## Target Details

---

**Background:** The protein encoded by this gene is a member of the signal-regulatory protein (SIRP) family, and also belongs to the immunoglobulin superfamily. SIRP family members are receptor-type transmembrane glycoproteins known to be involved in the negative regulation of receptor tyrosine kinase-coupled signaling processes. Alternatively spliced transcript variants encoding different isoforms have been described.

Cellular Localization: Membrane, Single-pass type I membrane protein

---

**Molecular Weight:** 42 kDa

---

**Gene ID:** 55423

---

**UniProt:** [Q9P1W8](#)

---

## Application Details

---

**Application Notes:** WB: 1:500-1:3000. Optimal dilutions/concentrations should be determined by the researcher. Not tested in other applications.

---

**Comment:** Positive Control: K562

---

**Restrictions:** For Research Use only

---

## Handling

---

**Format:** Liquid

---

**Concentration:** 0.9 mg/mL

---

**Buffer:** 0.1M Tris-Glycine ( pH 7), 10 % Glycerol, 0.01 % Thimerosal

---

**Preservative:** Thimerosal (Merthiolate)

---

**Precaution of Use:** This product contains Thimerosal (Merthiolate): a POISONOUS AND HAZARDOUS SUBSTANCE which should be handled by trained staff only.

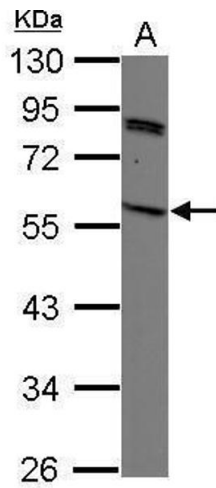
---

**Storage:** 4 °C, -20 °C

---

**Storage Comment:** Store as concentrated solution. Centrifuge briefly prior to opening vial. For short-term storage (1-2 weeks), store at 4°C. For long-term storage, aliquot and store at -20°C or below. Avoid multiple freeze-thaw cycles.

---



### Western Blotting

**Image 1.** WB Image Sample (30 ug of whole cell lysate) A:  
K562 10% SDS PAGE antibody diluted at 1:1000