

Datasheet for ABIN2854515  
**anti-MAP4K6 antibody (C-Term)**[Go to Product page](#)

## 1 Image

## Overview

|                      |                                       |
|----------------------|---------------------------------------|
| Quantity:            | 100 µL                                |
| Target:              | MAP4K6 (MINK1)                        |
| Binding Specificity: | C-Term                                |
| Reactivity:          | Human                                 |
| Host:                | Rabbit                                |
| Clonality:           | Polyclonal                            |
| Conjugate:           | This MAP4K6 antibody is un-conjugated |
| Application:         | Western Blotting (WB)                 |

## Product Details

|                   |  |
|-------------------|--|
| Immunogen:        | Recombinant protein encompassing a sequence within the C-terminus region of human MAP4K6. The exact sequence is proprietary. |
| Isotype:          | IgG  |
| Cross-Reactivity: | Human  |
| Characteristics:  | Rabbit Polyclonal antibody to MAP4K6 (misshapen-like kinase 1 (zebrafish))<br>MAP4K6 antibody [C1C3]                         |
| Purification:     | Purified by antigen-affinity chromatography.   |

## Target Details

|         |                |
|---------|----------------|
| Target: | MAP4K6 (MINK1) |
|---------|----------------|

## Target Details

|                   |  |
|-------------------|--|
| Alternative Name: | misshapen like kinase 1 ( <a href="#">MINK1 Products</a> )   |
| Background:       | <p>This gene encodes a serine/threonine kinase belonging to the germinal center kinase (GCK) family. The protein is structurally similar to the kinases that are related to NIK and may belong to a distinct subfamily of NIK-related kinases within the GCK family. Studies of the mouse homolog indicate an up-regulation of expression in the course of postnatal mouse cerebral development and activation of the cJun N-terminal kinase (JNK) and the p38 pathways. Alternative splicing occurs at this locus and four transcript variants encoding distinct isoforms have been identified.</p> |
| Molecular Weight: | 150 kDa  |
| Gene ID:          | 50488  |
| UniProt:          | <a href="#">Q8N4C8</a>   |
| Pathways:         | <a href="#">Synaptic Membrane</a>  |

## Application Details

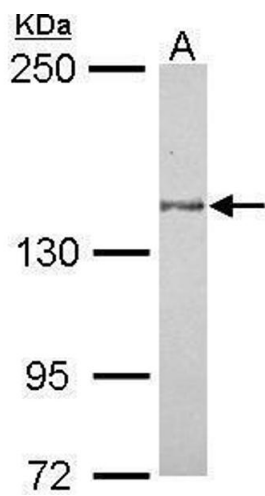
|                    |   |
|--------------------|---|
| Application Notes: | WB: 1:500-1:3000. Optimal dilutions/concentrations should be determined by the researcher.<br>Not tested in other applications. |
| Comment:           | Positive Control: MCF-7   |
| Restrictions:      | For Research Use only   |

## Handling

|                    |   |
|--------------------|---|
| Format:            | Liquid  |
| Concentration:     | 1 mg/mL   |
| Buffer:            | 1XPBS ( pH 7), 1 % BSA, 20 % Glycerol, 0.01 % Thimerosal  |
| Preservative:      | Thimerosal (Merthiolate)  |
| Precaution of Use: | This product contains Thimerosal (Merthiolate): a POISONOUS AND HAZARDOUS SUBSTANCE which should be handled by trained staff only.  |
| Storage:           | 4 °C, -20 °C  |
| Storage Comment:   | Store as concentrated solution. Centrifuge briefly prior to opening vial. For short-term storage (1-2 weeks), store at 4°C. For long-term storage, aliquot and store at -20°C or below. Avoid |

multiple freeze-thaw cycles.

Validation report #104437 for Cleavage Under Targets and Release Using Nuclease (CUT&RUN)



**Western Blotting**

**Image 1.** WB Image Sample (30 ug of whole cell lysate) A:  
MCF-7 5% SDS PAGE antibody diluted at 1:1000