

Datasheet for ABIN2854516
anti-APEH antibody (Center)[Go to Product page](#)

1 Image

Overview

Quantity:	100 µL
Target:	APEH
Binding Specificity:	Center
Reactivity:	Human
Host:	Rabbit
Clonality:	Polyclonal
Conjugate:	This APEH antibody is un-conjugated
Application:	Western Blotting (WB)

Product Details

Immunogen:	Recombinant protein encompassing a sequence within the center region of human APEH. The exact sequence is proprietary.
Isotype:	IgG
Cross-Reactivity:	Mouse (Murine), Pig (Porcine), Rat (Rattus)
Cross-Reactivity (Details):	Mouse (88 %), Pig (89 %), Rat (89 %)
Characteristics:	Rabbit polyclonal antibody to APEH (N-acylaminoacyl-peptide hydrolase) APEH antibody
Purification:	Purified by antigen-affinity chromatography.

Target Details

Target:	APEH
Alternative Name:	APEH (APEH Products)
Background:	<p>This gene encodes the enzyme acylpeptide hydrolase, which catalyzes the hydrolysis of the terminal acetylated amino acid preferentially from small acetylated peptides. The acetyl amino acid formed by this hydrolase is further processed to acetate and a free amino acid by an aminoacylase. This gene is located within the same region of chromosome 3 (3p21) as the aminoacylase gene, and deletions at this locus are also associated with a decrease in aminoacylase activity. The acylpeptide hydrolase is a homotetrameric protein of 300 kDa with each subunit consisting of 732 amino acid residues. It can play an important role in destroying oxidatively damaged proteins in living cells. Deletions of this gene locus are found in various types of carcinomas, including small cell lung carcinoma and renal cell carcinoma.</p> <p>Cellular Localization: Cytoplasm</p>
Molecular Weight:	81 kDa
Gene ID:	327

Application Details

Application Notes:	<p>Suggested dilution Reference Western blot 1:500-1:3000* Not tested in other applications.</p> <p>*Optimal dilutions/concentrations should be determined by the researcher.Suggested dilutionReferenceWestern blot1:500-1:3000*</p>
Comment:	Positive Control: HeLa
Restrictions:	For Research Use only

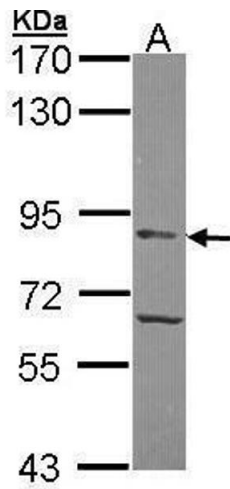
Handling

Format:	Liquid
Concentration:	0.34 mg/mL
Buffer:	0.1M Tris, 0.1M Glycine, 10 % Glycerol (pH 7). 0.01 % Thimerosal was added as a preservative.
Preservative:	Thimerosal (Merthiolate)
Precaution of Use:	This product contains Thimerosal (Merthiolate): a POISONOUS AND HAZARDOUS SUBSTANCE which should be handled by trained staff only.
Storage:	-20 °C

Handling

Storage Comment: Keep as concentrated solution. Aliquot and store at -20°C or below. Avoid multiple freeze-thaw cycles.

Validation report #104404 for Cleavage Under Targets and Release Using Nuclease (CUT&RUN)



Western Blotting

Image 1. WB Image Sample (30 ug of whole cell lysate) A:
Hela 7.5% SDS PAGE antibody diluted at 1:500