



Datasheet for ABIN2854517
anti-STK38L antibody



[Go to Product page](#)

1 Image

Overview

Quantity:	100 µL
Target:	STK38L
Reactivity:	Human
Host:	Rabbit
Clonality:	Polyclonal
Conjugate:	This STK38L antibody is un-conjugated
Application:	Western Blotting (WB)

Product Details

Immunogen:	Recombinant protein encompassing a sequence within the center region of human STK38L. The exact sequence is proprietary.
Isotype:	IgG
Cross-Reactivity:	Human
Characteristics:	Rabbit Polyclonal antibody to STK38L (serine/threonine kinase 38 like) STK38L antibody [N1C2]
Purification:	Purified by antigen-affinity chromatography.

Target Details

Target:	STK38L
Alternative Name:	serine/threonine kinase 38 like (STK38L Products)

Target Details

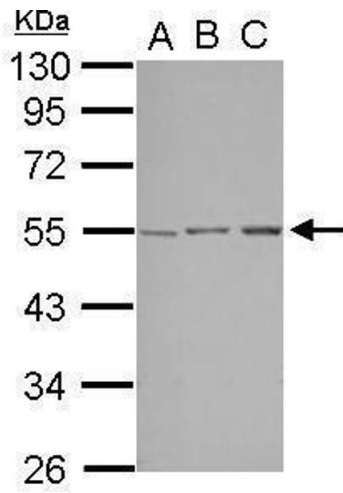
Background:	Involved in the regulation of structural processes in differentiating and mature neuronal cells. Cellular Localization: Cytoplasm , cytoskeleton
Molecular Weight:	54 kDa
Gene ID:	23012
UniProt:	Q9Y2H1

Application Details

Application Notes:	WB: 1:500-1:3000. Optimal dilutions/concentrations should be determined by the researcher. Not tested in other applications.
Comment:	Positive Control: A549 , HepG2 , HCT116
Restrictions:	For Research Use only

Handling

Format:	Liquid
Concentration:	1 mg/mL
Buffer:	1XPBS (pH 7), 1 % BSA, 20 % Glycerol, 0.01 % Thimerosal
Preservative:	Thimerosal (Merthiolate)
Precaution of Use:	This product contains Thimerosal (Merthiolate): a POISONOUS AND HAZARDOUS SUBSTANCE which should be handled by trained staff only.
Storage:	4 °C,-20 °C
Storage Comment:	Store as concentrated solution. Centrifuge briefly prior to opening vial. For short-term storage (1-2 weeks), store at 4°C. For long-term storage, aliquot and store at -20°C or below. Avoid multiple freeze-thaw cycles.



Western Blotting

Image 1. WB Image Sample (30 ug of whole cell lysate) A: A549 B: HepG2 C: HCT116 10% SDS PAGE antibody diluted at 1:1000