



Datasheet for ABIN2854520
anti-IL17RC antibody



[Go to Product page](#)

1 Image

Overview

Quantity:	100 µL
Target:	IL17RC
Reactivity:	Human
Host:	Rabbit
Clonality:	Polyclonal
Conjugate:	This IL17RC antibody is un-conjugated
Application:	Western Blotting (WB)

Product Details

Immunogen:	Recombinant protein encompassing a sequence within the center region of human IL17 receptor C. The exact sequence is proprietary.
Isotype:	IgG
Cross-Reactivity:	Human
Characteristics:	Rabbit polyclonal antibody to Interleukin-17 receptor C (interleukin 17 receptor C) IL17 receptor C antibody [N1C1]
Purification:	Purified by antigen-affinity chromatography.

Target Details

Target:	IL17RC
Alternative Name:	interleukin 17 receptor C (IL17RC Products)

Target Details

Background: This gene encodes a single-pass transmembrane protein that shares limited similarity with the interleukin-17 receptor. Multiple alternatively spliced transcript variants encoding different isoforms have been detected for this gene, but the full-length nature of only three have been determined to date.

Cellular Localization: Cell membrane, Single-pass type I membrane protein

Molecular Weight: 86 kDa

Gene ID: 84818

UniProt: [Q8NAC3](#)

Application Details

Application Notes: WB: 1:500-1:3000. Optimal dilutions/concentrations should be determined by the researcher. Not tested in other applications.

Comment: Positive Control: HeLaS3

Restrictions: For Research Use only

Handling

Format: Liquid

Concentration: 1 mg/mL

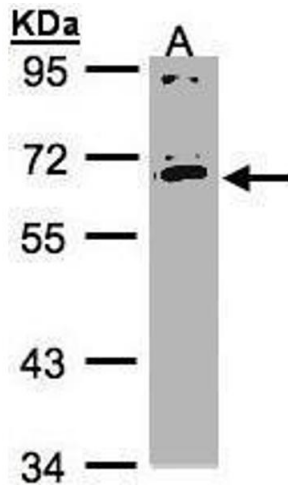
Buffer: 0.1M Tris-Glycine (pH 7), 10 % Glycerol, 0.01 % Thimerosal

Preservative: Thimerosal (Merthiolate)

Precaution of Use: This product contains Thimerosal (Merthiolate): a POISONOUS AND HAZARDOUS SUBSTANCE which should be handled by trained staff only.

Storage: 4 °C,-20 °C

Storage Comment: Store as concentrated solution. Centrifuge briefly prior to opening vial. For short-term storage (1-2 weeks), store at 4°C. For long-term storage, aliquot and store at -20°C or below. Avoid multiple freeze-thaw cycles.



Western Blotting

Image 1. WB Image Sample(30 ug whole cell lysate)
A:HeLa S3, 7.5% SDS PAGE antibody diluted at 1:1000